

CATHOLIC DISTRICT SCHOOL BOARD OF EASTERN ONTARIO

Box 2222, 2755 Hwy. 43,
Kemptville, Ontario K0G 1J0
Tel: 613-258-7757
Or Toll-free: 1-800-443-4562
Fax: 613-258-5067
www.cdsbeo.on.ca

Appendix 10

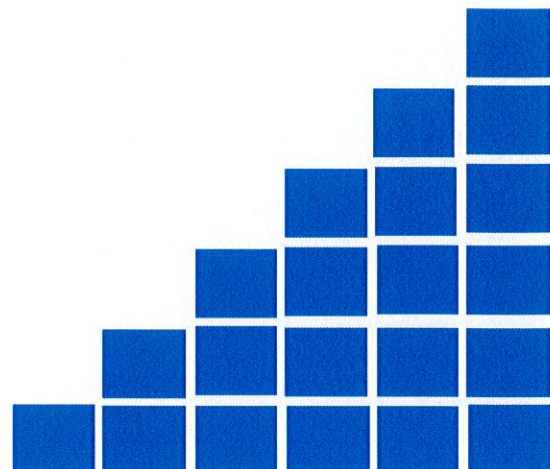
ST. PETER CATHOLIC SCHOOL

School Information Profile

October 2016

Brent Laton
Chair

Bill Gartland
Director of Education



Educating and Inspiring...heart, mind, body and soul!



APPENDIX 10
SCHOOL INFORMATION PROFILE
ST. PETER CATHOLIC ELEMENTARY
October 4, 2016

FACILITY PROFILE	
School	St. Peter Catholic Elementary
Address	1811 2nd Street East Cornwall Ontario K6H 6P1
Date of Construction	1963
Date and Description of Subsequent Additions	1979 Gymnasium and Storage / 1988 Principal Office
Number of Storeys	2
School Site Size (Acres)	4.74
Permanent Building Area - GFA (Sq. Ft)	19,730
Number of Portables on Site	4
Portable Area - GFA (Sq.Ft)	4,267
Site Plan Available	Yes - see Schedule 1
Floor Plan Available	Yes - see Schedule 2
Boundary Map Available	Yes - see Schedule 3 and 4
Official Plan/Zoning Map	Yes - see Schedule 5
Is the School Located Adjacent to a Catholic Church	Yes
Associated Parish & Distance from School	St. Peter Catholic Church
Does the School have a Child Care Centre	No
Does the School have Child Care on Site	Yes
Name of Child Care Provider	Mary Seguin - Where Children Grow
Does the School have a Before & After Child Care Program	Yes
Type of Child Care	Before and After School Child Care Program
Child Care Capacity	Kindergarten (44 months to 68 months) 13 spaces, Primary Junior School Age (68 months to age 13) 30 spaces, Junior School Age (9-13) 20
Child Care Enrolment and Ages Served	14 Kindergarten / 32 School Age

SCHOOL CAPACITY	
Current Enrolment	146
School Capacity (OTG)	245
Surplus/(Shortage) of Pupil Places	99
Room Summary from SFIS	see Schedule 6
Utilization Rate - excluding Portables (%)	59.6%
Utilization Rate - including Portables (%)	46.5%
Total Number of Permanent Instructional Rooms in School	10
Total Number of Portable Units on School Site	0
Total Number of Portapak/RCM Units on School Site	4

INSTRUCTIONAL AND SPECIALIZED CLASSROOM SPACES	
Number of Regular Classrooms	10
Number of Portable Classrooms	4
Number of Purpose Build Kindergarten Classrooms	0
Number of Special Education Rooms	1
Does the School have Appropriate Existing Space for:	
- Special Education	Yes
- Literacy Resource Centre	No
- Science and Technology Lab	No
Total Number of Dedicated Rooms	1
- Computer Lab	Yes
- Arts Facilities	No
Total Number of Dedicated Rooms	1
- Gymnasium	Yes
- General Purpose Room	No
- Music Room	No
- Assembly/Auditorium	No
- Library	Yes
- Staffroom	Yes
- Stage	No
- Chapel	No
- Kitchen	Yes - 2
- Cafeteria	No

OUTDOOR PLAY AREA AND GREEN SPACE	
Area of Green Space (Sq ft)	88,062
Area of Hard Surfaced Play Area (Sq ft)	10,908
Total Number of Playfields	1
List of Outdoor Facilities (e.g. tracks, basketball court, tennis court, etc.)	basketball court, baseball field

FACILITY CONDITION	
Definition of what the FCI Represents	- FCI is determined by the ratio between the five-year renewal needs and the replacement value for the school; a higher FCI indicates a higher cost to repair the facility
Replacement Value (\$) (A)	\$ 6,137,740
Five-year Renewal Needs (\$) (B)	\$ 2,783,247
Facility Condition Index (FCI) of School (B) / (A)	45.3%
Board's Average FCI	17.7%
Total Number of Parking Spaces	31
Total Number of Accessible Parking Spaces	1
Is there an Adequate Amount of Parking Provided	Yes

ACCESSIBILITY	
Is the School Universally Accessible	No
Does the School have an Operating Elevator/Lift	No
Do Students have Access to Barrier Free Washroom	Yes - 1st floor only
Are Student Washrooms Accessible on Each Level of the Building	No
Are the Designated Change rooms Accessible to the Gym	n/a
Accessibility Audit Cost to Retrofit	\$ 416,067

TEN-YEAR HISTORY OF MAJOR FACILITY IMPROVEMENTS	
Ten-year History of Major Facility Improvements	see Schedule 7

PROJECTED FIVE-YEAR FACILITY RENEWAL NEEDS	
Five-year Projected Facility Renewal Needs	see Schedule 8

FINANCIAL*	
Expenditures on School Staff: Teaching (\$)	\$ 1,163,022
Expenditures on School Staff: Non-Teaching (\$)	\$ 424,337
Expenditures on School Utility (\$)	\$ 37,455
- Total	\$ 1,624,814
- Per Square Foot (including Portables)	\$ 67.71
- Per Student	\$ 11,859.96
Grant Revenues for School Administration (identify any loss of revenues) (\$)	Receive benchmark level funding for 0.93 FTE Principal and 1.0 FTE Secretary. Benchmark Salary & Benefits for Principal is \$125,377. Benchmark Salary & Benefits for Secretary is \$53,494. Any school closure would result in loss of benchmark level funding for Principal. Level of School Secretarial funding depends on enrolment at new location for displaced students.
Grant Revenues for School Operations (identify any loss of revenue (\$)	Loss of grant revenue is tied to calculated square footage requirement based on enrolment and includes School Operations, Top-up Funding and School Renewal. The school is only receiving approximately 57.3% of the maximum operations grants due to low enrolment.
What is the impact of this Schools Closure on Facility Operating and Capital Budgets	Total facility operations grants would be reduced by approximately \$114,997. Five-year capital renewal needs totalling approximately \$2.8 million would be eliminated.
What is the impact of this School Remaining Open on Facility Operating and Capital Budgets	The costs associated with operating and maintaining this facility exceed the level of funding generated by approximately \$65,491. Five-year renewal needs totalling more than \$2.8 million would be required to maintain the facility.

* Numbers are approximate

2015-16 TRANSPORTATION		
Bus Loading Zone	Yes	
Average Distance to School for Students (KM)	1.62	
Number of Students Bussed to School	49	
Percentage of Students that are Eligible for Transportation (%)	33.6%	
Number of Students Not Eligible for Transportation	97	
Percentage of Students that are Not Eligible for Transportation (%)	66.4%	
Shortest Bus Ride Time to School (minutes)	3	
Longest Bus Ride Time to School (minutes)	45	
Average Length of Bus Ride Time to School (minutes)	14	
Number of Primary JK - 3 Students out of Boundary and Percentage of Total	14	9.6%
Number of Junior 4 - 6 Students out of Boundary and Percentage of Total	8	5.5%
Number of Intermediate 7 - 8 Students out of Boundary and Percentage of Total	0	0.0%
Total Number of Students out of Boundary and Percentage of Total	22	15.1%
Aggregate Cost to Transport Students to School (\$)	\$ 57,500	
Cost per Student Bussed to School (\$)	\$ 1,173.47	

INSTRUCTIONAL PROFILE	
2016-17 STAFFING - TEACHING	
Number of Classroom Teachers	8.00
Number of Prep Time Teachers	1.49
Number of Special Education Teachers	1.80
Number of Library/Guidance Teachers	0.30
Total Teaching Staff	11.59

2016-17 STAFFING - NON-TEACHING	
Full-Time Principal (FTE)	1.00
Full-Time Vice-Principal (FTE)	0.00
Secretarial Full-Time Equivalent (FTE)	1.00
Custodial Full-Time Equivalent (FTE)	1.25
Number of Full-Time Designated Early Childhood Educators (ECE)	1.00
Number of Full-Time Educational Assistants (EA)	2.75
Total Non-Teaching Staff	7.00

2016-17 SCHOOL ORGANIZATION	
Grade Configuration	JK-6
Grade Organization (Number of Classes)	See Schedule 9
Total Number of Classes	7
Total Number of Split Classes	4
Split Classes (%)	57.1%

PROGRAM OFFERINGS AND SPECIALIZED SERVICES	
Arts Program	No
Extended French	No
French Immersion	Yes JK-6
Information Technology to Support Curriculum	Yes
Guidance Counselling	No
Religious & Family Life Programs	Yes
Career Education Programs (e.g. Co-op Placement)	No
Early Literacy Resources	Yes
Culturally Inclusive Programs	Yes
English-as-a-Second Language Programming	No
Special Education Classes	No
Special Education Resources	Yes
Programs/Support for Students at Risk	Yes
Other Specialized Programs (Identify)	n/a
Does the School have Remedial Programs Onsite During the Day and After School	Yes - homework club
Does the School have Access to these Programs in Nearby Facilities	Yes
Does the School Location Easily Attract Parent/Family/Community Volunteers	Yes

EXTRACURRICULAR ACTIVITIES & SPECIAL EVENTS

School Plays	Yes
Dance/Socials	Yes
Religious Retreats	Yes
Graduation Celebrations	Yes
Athletics	Yes
Clubs	Yes
Leadership/Student Council	Yes
Fundraising	Yes

STUDENT ACHIEVEMENT - EQAO - 2014-15

	Primary - School/Board	Junior - School/Board
Reading - Level 3-4	57 / 78	74 / 81
Writing - Level 3-4	39 / 80	79 / 83
Math - Level 3-4	30 / 66	42 / 51

PREVIOUS FIVE-YEAR ENROLMENT AND CAPACITY UTILIZATION

Historical Five-year Enrolment and Capacity Utilization	See Schedule 10
---	-----------------

TEN-YEAR ENROLMENT PROJECTIONS AND CAPACITY UTILIZATION

Ten-year Enrolment and Capacity Utilization Projections	See Schedule 11
---	-----------------

OTHER SCHOOL USE PROFILE

Current Non-School Programs or co-located within School	No
- Rent Being Collected	n/a
- Operating at Full-Cost Recovery	n/a
Community Use of the School (Permits)	Yes - 1
- Rent Being Collected	No
- Operating at Full-Cost Recovery	No
Before and After School Program	Yes
- Rent Being Collected	No
- Operating at Full-Cost Recovery	No
Lease Terms at the School	annual Child Care lease
- Rent Being Collected	No
- Operating at Full-Cost Recovery	No
Factors of a Suitable Facility for Community Planning Partnership	<p>- Facilities utilized at 60% or less for the past 2 consecutive years and/or have had 200 or more unused pupil places the last 2 years</p> <p>- Facilities projected to be utilized 60% or less for the next 5 years</p> <p>- Facility has not been designated as surplus space under Ontario Regulation 444/98</p> <p>- Space not required for Board programming or other uses</p>
Does the school meet the above Board criteria	No
Current Community Planning Partnerships	n/a
- Rent Being Collected	n/a
- Operating at Full-Cost Recovery	n/a

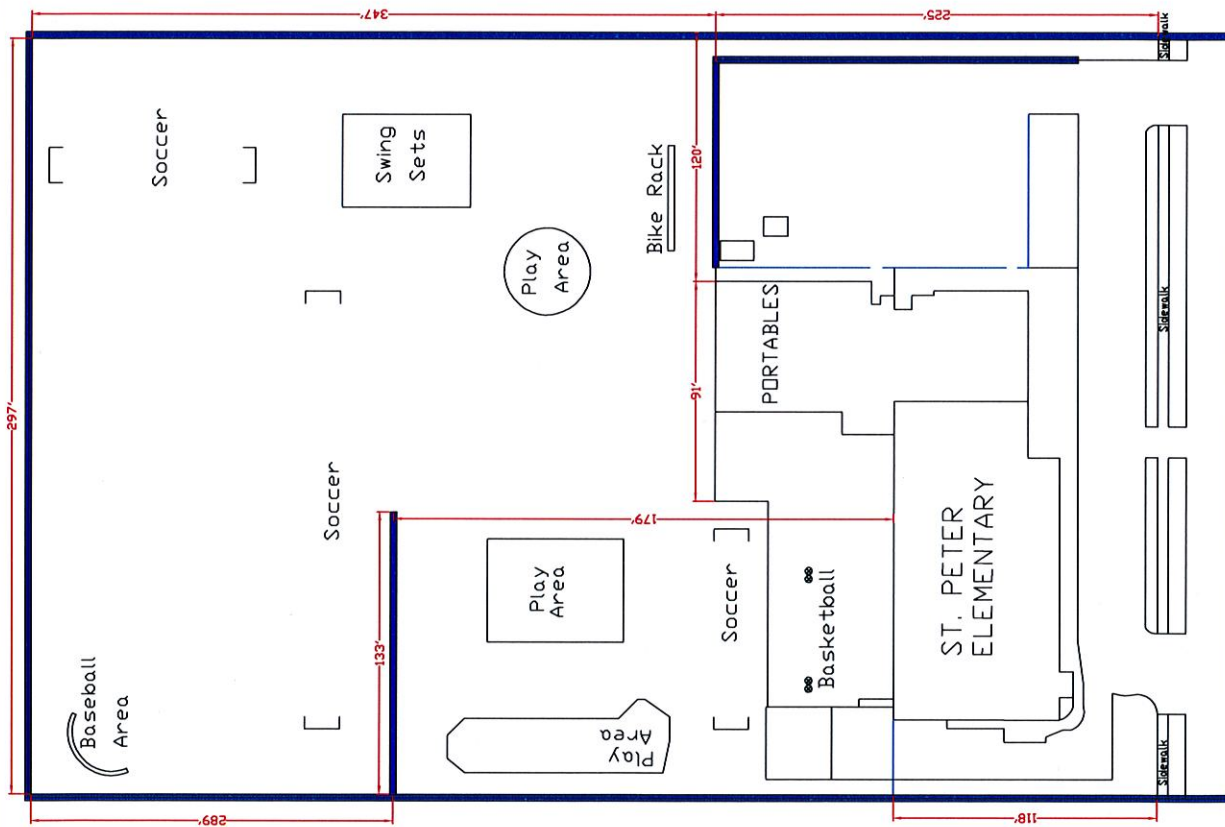
SITE PLAN - SCHEDULE 1

Project Title:
St. Peter
Catholic School
1811 Second Street East
Cornwall, Ontario
K6H 6P1

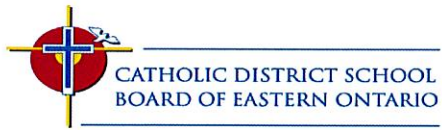
Drawing Title:
Site Plan with Measurements

Date: Jan-13-2015
Dwg. SPM

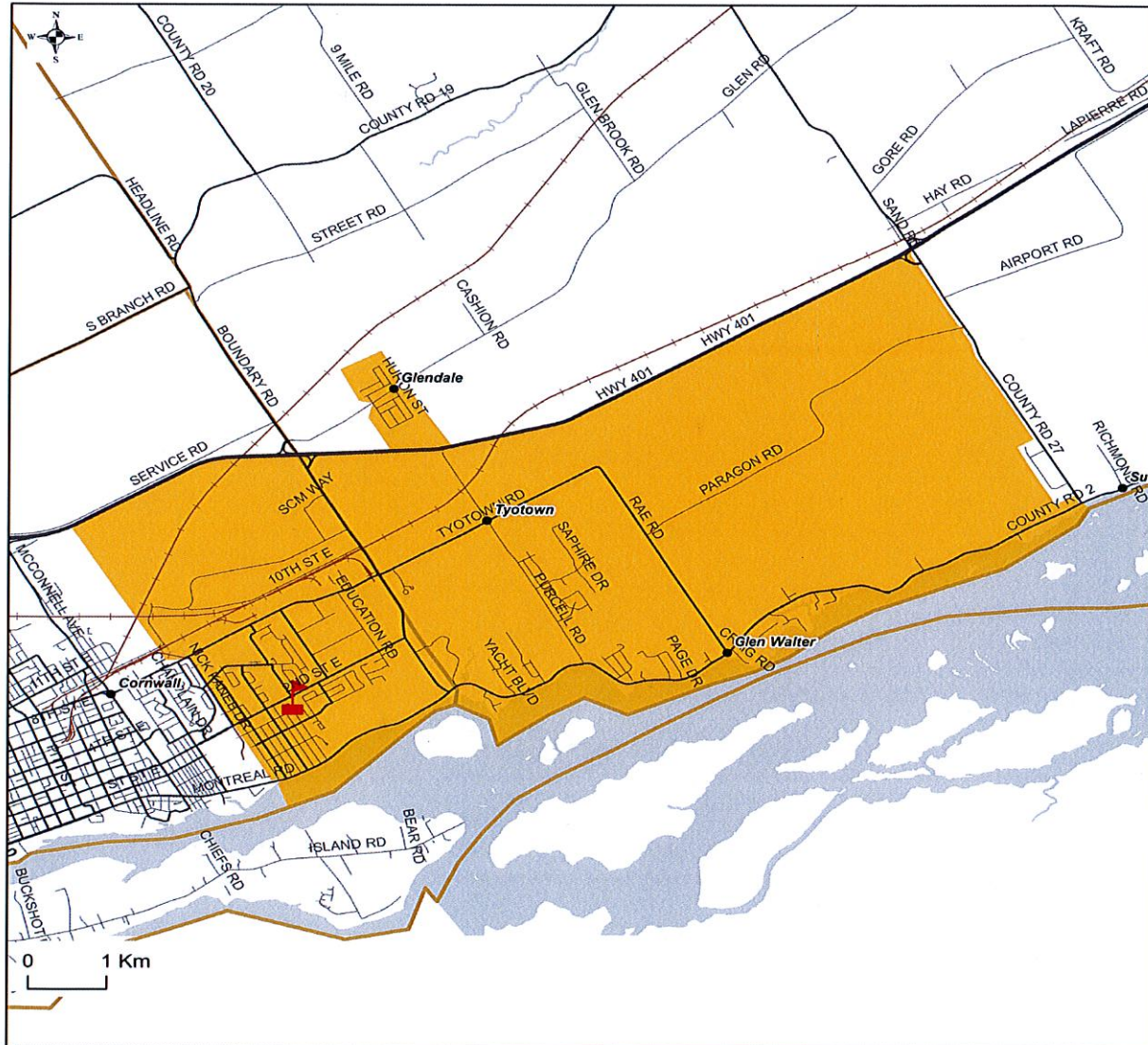
Drawn By: D.T.
Rev #: 0





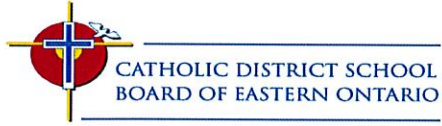


St. Peter Catholic School
Junior Kindergarten to Grade 6
Regular Attendance Boundary

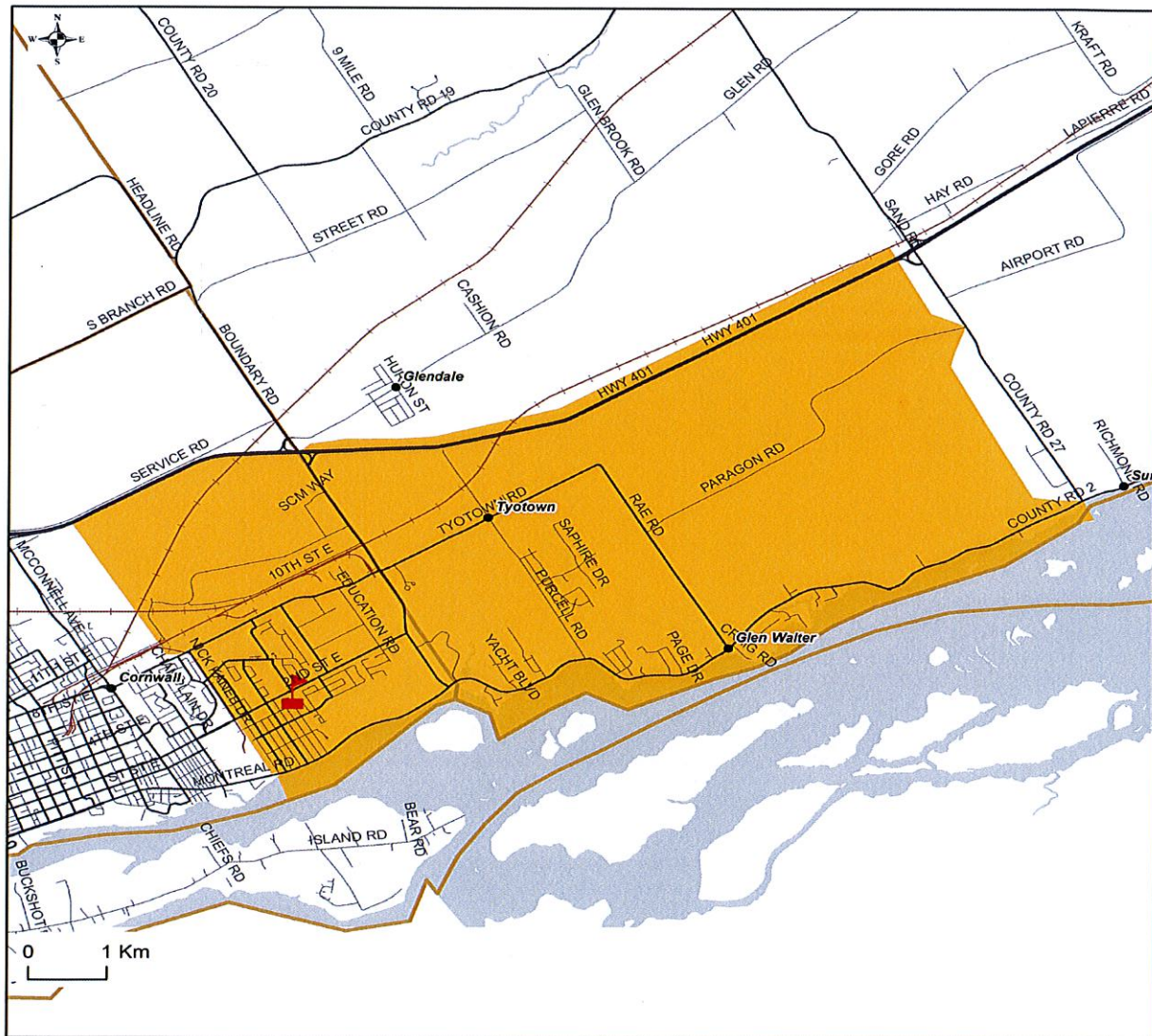


Student Transportation of Eastern Ontario, September 2015
Map is for illustrative purposes only.
Please use the School Locator Tool to
determine the school of attendance by civic address
found on the STEO Website at <http://www.steo.ca>

 St. Peter Catholic School
1811 Second Street East
Cornwall, Ontario
K6H 6P1
Phone: 613-933-1007



**St. Peter Catholic School
Junior Kindergarten to Grade 6
Immersion Attendance Boundary**



Student Transportation of Eastern Ontario, September 2015
Map is for illustrative purposes only.
Please use the School Locator Tool to
determine the school of attendance by civic address
found on the STEO Website at <http://www.steo.ca>



St. Peter Catholic School
1811 Second Street East
Cornwall, Ontario
K6H 6P1
Phone: 613-933-1007

ST. PETER C.S. - 1811 SECOND STREET EAST



ZONING: RESIDENTIAL 20 (RES 20)

OFFICIAL PLAN DESIGNATION: URBAN RESIDENTIAL (U. RES)

St. Peter - Schedule 6			
Room Summary from SFIS			
Permanent Space Room Summary			
Room #	Space Type	Current Use	Loading
109	Classroom	Classroom	23.0
203	Classroom	Classroom	23.0
204	Classroom	Classroom	23.0
205	Classroom	Classroom	23.0
206	Classroom	Classroom	23.0
207	Classroom	Classroom	23.0
202	Classroom	Resource-General	23.0
209	Classroom	Other	23.0
108	Gymnasium	Gymnasium	-
104	Kindergarten	Jr/Sr Kindergarten	26.0
106	Kindergarten	Jr/Sr Kindergarten	26.0
111	Special Education	Special Education	9.0
113	Staff Work Room/Lounge	Staff Room/Lounge	-
2015-16 OTG			245.0
Non-Permanent Space Room Summary			
Room #	Space Type	Current Use	Loading
114	Portapak	Resource	23.0
115	Portapak	Library Resource	0.0
116	Portapak	Classroom	23.0
117	Portapak	Classroom	23.0
2015-16 OTG			69.0

Sacred Heart - Schedule 7		
Ten-Year Renewal History		
Brief Description	Year	Cost
Replace [01.4 Roofing - Addition 1]	2007	\$59,150
Replace [04.5-040 Communication systems	2007	\$16,011
Replace [01.4 Roofing - Original bldg.	2007	\$146,652
Replace [04.1-010 Primary switchgear	2008	\$78,541
Replace Paint Wallcoverings	2009	\$21,239
Replace [04.3-010 Interior Lighting -	2009	\$14,289
Replacement [D502002 Lighting	2009	\$20,932
Install [06.7 Lighting occupancy sensors	2009	\$5,783
Replacement controls/instrumentation/lighting	2009	\$8,362
Replacement [C301005 Painting	2012	\$5,956
Addition [Door Magnets - Main	2012	\$5,619
Replacement [C3020 Floor Finishes	2013	\$10,159
Replacement [D302002 Hot Water Boilers	2013	\$5,865
Removal [F2020 Hazardous abatement	2013	\$13,015
Replacement [G204005 Signage	2013	\$2,494
Renovations [B102004 Canopy	2014	\$65,969
Renovations [B102004 Canopy	2014	\$50,000
Renovations [B2010 - Exterior Walls	2014	\$214,108
Renovations [B2020 Exterior windows	2014	\$145,000
Renovations [F2020 Hazardous abatement	2014	\$38,000
Renovations [G2050 Landscaping]	2014	\$4,200
Cummulative Cost		\$931,344

St. Peter - Schedule 8				
Projected Five-Year Renewal Needs by Priority				
Year	Brief Description	Priority	Cost	Cummulative Cost
2015	Replacement [D304003 Heating/Chilling water distribution systems]	Urgent	\$ 392,454	\$ 392,454
2015	Study [D304003 Heating/Chilling water distribution systems]	Urgent	\$ 11,024	\$ 403,478
2015	Study [G30 Site Civil/Mechanical Utilities]	Urgent	\$ 11,024	\$ 414,502
2015	Replace [G30 Site Civil/Mechanical Utilities]	Urgent	\$ 218,275	\$ 632,778
2015	Replace [B2010 Exterior Walls - Sealant]	High	\$ 78,270	\$ 711,048
2015	Replace [A1010 Standard Foundations - Parging - Original Building]	High	\$ 12,126	\$ 723,174
2015	Study [D3050 Terminal & Package Units]	High	\$ 11,024	\$ 734,198
2015	Replacement [D3050 Terminal & Package Units]	High	\$ 27,560	\$ 761,758
2015	Major Repair [D302005 Auxiliary Equipment - Stack & Breaching]	High	\$ 16,536	\$ 778,294
2015	Replacement [D3060 Controls & Instrumentation - Original Building]	High	\$ 110,240	\$ 888,534
2015	Study [D2020 Domestic Water Distribution - Piping]	High	\$ 11,024	\$ 899,558
2015	Replacement [D2020 Domestic Water Distribution - Piping]	High	\$ 142,210	\$ 1,041,768
2017	Replacement [B3010 Roof Coverings - Original Building - B section new]	High	\$ 300,000	\$ 1,341,768
2015	Replace [C1030 Fittings - Millwork - Original Building & Addition 1]	High	\$ 188,510	\$ 1,530,278
2015	Replacement [D304007 Exhaust Systems - Original Building]	High	\$ 11,024	\$ 1,541,302
2015	Replacement [D502001 Branch Wiring - Original Building]	High	\$ 330,720	\$ 1,872,022
2015	Study [D502001 Branch Wiring - Original Building]	High	\$ 11,024	\$ 1,883,046
2015	Replace [G2020 Parking Lots - Asphalt Paved]	High	\$ 97,011	\$ 1,980,058
2015	Replace [G2020 Parking Lots - Unpaved]	High	\$ 23,150	\$ 2,003,208
2015	Replace [B2030 Exterior Doors - Exterior Door Hardware - Orig Bldg, Add	High	\$ 16,536	\$ 2,019,744
2015	Replacement [D303099 Other Cooling Generating Systems - DX-Split System]	High	\$ 11,024	\$ 2,030,768
2015	Replace [C3020 Floor Finishes - Vinyl Tile - Original Building]	Medium	\$ 119,059	\$ 2,149,827
2018	Replacement [D304001 Air Distribution, Heating & Cooling - Original Building]	Medium	\$ 235,555	\$ 2,385,382
2015	Replace [C1020 Interior Doors - Original Building]	Medium	\$ 77,168	\$ 2,462,550
2015	Replace [C1020 Interior Doors - Interior Door Hardware - Original Building & Add 1	Medium	\$ 23,150	\$ 2,485,700
2016	Replace [G2030 Pedestrian Paving - Asphalt Walkways]	Medium	\$ 24,253	\$ 2,509,953
2016	Replacement [D4020 Standpipe Systems - Original Building]	Medium	\$ 34,239	\$ 2,544,192
2018	Replacement [D301002 Gas Supply System - Original Building]	Medium	\$ 15,026	\$ 2,559,218
2015	Replace [B2030 Exterior Doors - Original Building, Addition 1 & Portapak]	Low	\$ 39,686	\$ 2,598,904
2016	Replacement [D2010 Plumbing Fixtures]	Low	\$ 29,770	\$ 2,628,674
2016	Replacement [D503099 Other Communications & Alarm Systems - Original Building	Low	\$ 8,298	\$ 2,636,973
2018	Replacement [C1030 Fittings - Original Building - girls]	Low	\$ 6,963	\$ 2,643,935
2018	Replacement [C1030 Fittings - Original Building - boys]	Low	\$ 6,963	\$ 2,650,898
2016	Replacement [C1030 Fittings - Original Building]	Low	\$ 74,426	\$ 2,725,324
2016	Replacement [C3030 Ceiling Finishes - Addition 1]	Low	\$ 20,282	\$ 2,745,606
2016	Replacement [C3010 Wall Finishes - Original Building - complete 2nd floor]	Low	\$ 31,686	\$ 2,777,291
2017	Replacement [C301005 Painting to Walls - Main Entrance Stairwell]	Low	\$ 5,956	\$ 2,783,247

St. Peter - Schedule 9 2016-17 School Organization										
Staff FTE	Prog	JK	SK	1	2	3	4	5	6	Total
1.0	Imm	21	10							31
1.0	Core			8	7					15
1.0	Imm			10						10
1.0	Imm				13					13
1.0	Blended					15				15
1.0	Blended						18			18
1.0	Core							11	4	15
1.0	Imm							11	9	20
7.0		21	10	18	20	15	18	22	13	137

Number of Classes	7
FDK Class Size Average (JK/SK)	31.00
Primary Class Size Average (Gr. 1-3)	13.25
Grade 4 - 8 Class Size Average (4-8)	17.67
Number of Split Classes	4
% Split Classes	57.1%

St. Peter - Schedule 10 Five-Year Historical Enrolment Projections and Capacity Utilization											
OTG	245										
Year	JK	SK	1	2	3	4	5	6	SC	Total	Utilization
11-12	21	37	16	19	20	19	11	24	9	176	71.8%
12-13	17	18	29	18	17	20	23	16	0	158	64.5%
13-14	25	18	23	26	18	13	19	21	0	163	66.5%
14-15	18	24	17	19	24	14	12	18	0	146	59.6%
15-16	11	22	23	18	21	23	14	14	0	146	59.6%

St. Peter - Schedule 11											
Ten-Year Enrolment Projections and Capacity Utilization											
OTG		245									
Year	JK	SK	1	2	3	4	5	6	Total	Utilization	
16-17	21	10	18	20	15	18	22	13	137	55.9%	
17-18	21	21	13	19	25	16	18	22	155	63.3%	
18-19	21	21	22	13	20	22	16	18	153	62.4%	
19-20	22	21	22	22	13	18	23	16	157	64.1%	
20-21	22	22	22	22	22	13	20	18	161	65.7%	
21-22	22	22	22	22	22	20	13	18	161	65.7%	
22-23	22	22	22	22	22	20	20	13	163	66.5%	
23-24	22	22	22	22	22	20	20	21	171	69.8%	
24-25	22	22	22	22	22	20	20	21	171	69.8%	
25-26	22	22	22	22	22	20	20	21	171	69.8%	