

---

# **CATHOLIC DISTRICT SCHOOL BOARD OF EASTERN ONTARIO**

---

Box 2222, 2755 Hwy. 43,  
Kemptville, Ontario K0G 1J0  
Tel: 613-258-7757  
Or Toll-free: 1-800-443-4562  
Fax: 613-258-5067  
[www.cdsbeo.on.ca](http://www.cdsbeo.on.ca)

## **Appendix 11**

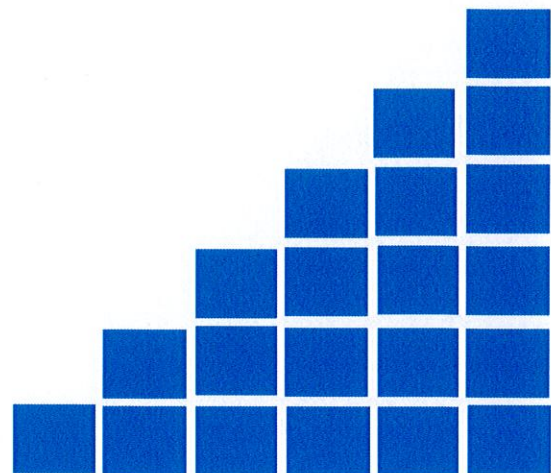
# **ST. JOSEPH CATHOLIC SECONDARY SCHOOL**

## **School Information Profile**

**October 2016**

**Brent Laton**  
Chair

**Bill Gartland**  
Director of Education



***Educating and Inspiring...heart, mind, body and soul!***



**APPENDIX 11**  
**SCHOOL INFORMATION PROFILE**  
**ST. JOSEPH CATHOLIC SECONDARY SCHOOL**  
**October 4, 2016**

FACILITY PROFILE	
School	St. Joseph Catholic Secondary School
Address	1500a Cumberland Street, Cornwall, Ontario K6J 5V9
Date of Construction	1967
Date and Description of Subsequent Additions	1992 Addition
Number of Storeys	2
School Site Size (Acres)	13
Permanent Building Area - GFA (Sq. Ft)	93,295
Number of Portables on Site	8
Portable Area - GFA (Sq.Ft)	6,144
Site Plan Available	Yes - see Schedule 1
Floor Plan Available	Yes - see Schedule 2
Boundary Map Available	Yes - see Schedule 3 and 4
Official Plan/Zoning Map	Yes - see Schedule 5
Is the School Located Adjacent to a Catholic Church	No
Associated Parish & Distance from School	Blessed Sacrement Catholic Church - 2 Km
Does the School have a Child Care Centre	No
Does the School have Child Care on Site	No
Name of Child Care Provider	n/a
Does the School have a Before & After Child Care Program	No
Type of Child Care	n/a
Child Care Capacity	n/a
Child Care Enrolment and Ages Served	n/a
SCHOOL CAPACITY	
Current Enrolment	739.42
School Capacity (OTG)	810
Surplus/(Shortage) of Pupil Places	70.58
Room Summary from SFIS	see Schedule 6
Utilization Rate - excluding Portables (%)	91.3%
Utilization Rate - including Portables (%)	80.8%
Total Number of Permanent Instructional Rooms in School	38
Total Number of Portable Units on School Site	8
Total Number of Portapak/RCM Units on School Site	0

INSTRUCTIONAL AND SPECIALIZED CLASSROOM SPACES	
Number of Regular Classrooms	22
Number of Portable Classrooms	5
Number of Purpose Build Kindergarten Classrooms	n/a
Number of Special Education Rooms	6
Does the School have Appropriate Existing Space for:	
- Special Education	Yes
- Literacy Resource Centre	No
- Science and Technology Lab	Yes
Total Number of Dedicated Rooms	8
- Computer Lab	Yes
- Arts Facilities	Yes
Total Number of Dedicated Rooms	4
- Gymnasium	Yes - 2 - one large, one small
- General Purpose Room	Yes
- Music Room	Yes - choir room, band room, recording studio
- Assembly/Auditorium	Yes - Auditorium capacity 850
- Library	Yes
- Staffroom	Yes
- Stage	Yes - professional size with lighting & sound room
- Chapel	Yes
- Kitchen	Yes - Hospitality, staffroom
- Cafeteria	Yes - capacity 800

OUTDOOR PLAY AREA AND GREEN SPACE	
Area of Green Space (Sq ft)	157,505
Area of Hard Surfaced Play Area (Sq ft)	41,800 - Asphalt track
Total Number of Playfields	2 - GV side and St. Joseph
List of Outdoor Facilities (e.g. tracks, basketball court, tennis court, etc.)	Asphalt Track, baseball diamond, basketball court, tennis courts

FACILITY CONDITION	
Definition of what the FCI Represents	- FCI is determined by the ratio between the five-year renewal needs and the replacement value for the school; a higher FCI indicates a higher cost to repair the facility
Replacement Value (\$) (A) (note: 1)	\$ 55,997,890
Five-year Renewal Needs (\$) (B) (note: 1)	\$ 15,580,706
Facility Condition Index (FCI) of School (B) / (A)	27.8%
Board's Average FCI	17.7%
Total Number of Parking Spaces	133
Total Number of Accessible Parking Spaces	1
Is there an Adequate Amount of Parking Provided	Yes, can also utilize GV parking (100 spots)
Note 1: Include General Vanier Secondary owned by the UCDSB	

ACCESSIBILITY	
Is the School Universally Accessible	Yes
Does the School have an Operating Elevator/Lift	Yes
Do Students have Access to Barrier Free Washroom	Yes
Are Student Washrooms Accessible on Each Level of the Building	Yes
Are the Designated Change rooms Accessible to the Gym	Yes
Accessibility Audit Cost to Retrofit	\$ 354,720

TEN-YEAR HISTORY OF MAJOR FACILITY IMPROVEMENTS	
Ten-year History of Major Facility Improvements	see Schedule 7

PROJECTED FIVE-YEAR FACILITY RENEWAL NEEDS	
Five-year Projected Facility Renewal Needs	see Schedule 8

FINANCIAL*	
Expenditures on School Staff: Teaching (\$)	\$ 4,899,944
Expenditures on School Staff: Non-Teaching (\$)	\$ 925,551
Expenditures on School Utility (\$)	\$ 89,050
- Total	\$ 5,914,545
- Per Square Foot (including Portables)	\$ 59.48
- Per Student	\$ 7,998.90
Grant Revenues for School Administration (identify any loss of revenues) (\$)	Receive benchmark level funding as a combined school for 1.0 FTE Principal, 1.47 FTE Vice-Principal and 3.56 FTE Secretaries. Benchmark Salary & Benefits for Principal is \$136,734. Benchmark Salary & Benefits for Vice-Principal is \$125,285 and Benchmark Salary & Benefits for Secretary is \$56,352. Any school closure would result in loss of benchmark level funding for Principal and Vice-Principal. Level of School Secretarial funding depends on enrolment at new location for displaced students.
Grant Revenues for School Operations (identify any loss of revenue (\$)	Loss of grant revenue is tied to calculated square footage requirement based on enrolment and includes School Operations, Top-up Funding and School Renewal. The school is receiving 89.7% of the maximum operations grants.
What is the impact of this Schools Closure on Facility Operating and Capital Budgets	Total facility operations grants would be reduced by approximately \$779,743. Five-year capital renewal needs totalling approximately \$15.6 million would be eliminated. (Note: 1)
What is the impact of this School Remaining Open on Facility Operating and Capital Budgets	The costs associated with operating and maintaining this facility is below the level of funding generated by approximately \$91,736. Five-year renewal needs totalling more than \$15.6 million would be required to maintain the facilities. (Note: 1)

\* Numbers are approximate

Note: 1 - Includes General Vanier Secondary owned by the UCDSB

2015-16 TRANSPORTATION		
Bus Loading Zone	Yes	
Average Distance to School for Students (KM)	9,951 Metres	
Number of Students Bussed to School	493	
Percentage of Students that are Eligible for Transportation (%)	67.4%	
Number of Students Not Eligible for Transportation	238	
Percentage of Students that are Not Eligible for Transportation (%)	32.6%	
Shortest Bus Ride Time to School (minutes)	4	
Longest Bus Ride Time to School (minutes)	76	
Average Length of Bus Ride Time to School (minutes)	27	
Number of Senior 9 - 12 Students out of Boundary and Percentage of Total	54	7.4%
Total Number of Students out of Boundary and Percentage of Total	54	7.4%
Aggregate Cost to Transport Students to School (\$)	\$ 748,625	
Cost per Student Bussed to School (\$)	\$ 1,518.51	

INSTRUCTIONAL PROFILE	
2016-17 STAFFING - TEACHING	
	Secondary
Number of Classroom Teachers	42.60
Number of Special Education Teachers	3.50
Number of Library/Guidance Teachers	2.73
Total Teaching Staff	48.83

2016-17 STAFFING - NON-TEACHING	
Full-Time Principal (FTE)	1.00
Full-Time Vice-Principal (FTE)	1.00
Secretarial Full-Time Equivalent (FTE)	3.50
Custodial Full-Time Equivalent (FTE)	4.88
Number of Full-Time Designated Early Childhood Educators (ECE)	n/a
Number of Full-Time Educational Assistants (EA)	4.50
Total Non-Teaching Staff	14.88

2016-17 SCHOOL ORGANIZATION	
Grade Configuration	9-12
Grade Organization (Number of Classes)	n/a
Total Number of Classes	n/a
Total Number of Split Classes	n/a
Split Classes (%)	n/a

PROGRAM OFFERINGS AND SPECIALIZED SERVICES	
Arts Program	Yes
Extended French	No
French Immersion	Yes
Information Technology to Support Curriculum	Yes
Guidance Counselling	Yes
Religious & Family Life Programs	Yes
Career Education Programs (e.g. Co-op Placement)	Yes
Early Literacy Resources	n/a
Culturally Inclusive Programs	Yes
English-as-a-Second Language Programming	No
Special Education Classes	Yes
Special Education Resources	Yes
Programs/Support for Students at Risk	Yes
Other Specialized Programs (identify)	SHSM - Business, Transportation Tech, Hospitality & Tourism, Dual Credit Program, OYAP, Construction, Machine shop & small engine repair
Does the School have Remedial Programs Onsite During the Day and After School	No
Does the School have Access to these Programs in Nearby Facilities	Yes
Does the School Location Easily Attract Parent/Family/Community Volunteers	Yes

### EXTRACURRICULAR ACTIVITIES & SPECIAL EVENTS

School Plays	Yes
Dance/Socials	Yes
Religious Retreats	Yes
Graduation Celebrations	Yes
Athletics	Yes
Clubs	Yes
Leadership/Student Council	Yes
Fundraising	Yes

### STUDENT ACHIEVEMENT - EQAO - 2014-15

	School / Board	
OSSLT - First Time Eligible Students - Fully Participating Students	85 / 85	
	Applied - School/Board	Academic - School/Board
Math - Grade 9	67 / 59	88 / 86

### PREVIOUS FIVE-YEAR ENROLMENT AND CAPACITY UTILIZATION

Historical Five-year Enrolment and Capacity Utilization	See Schedule 10
---	-----------------

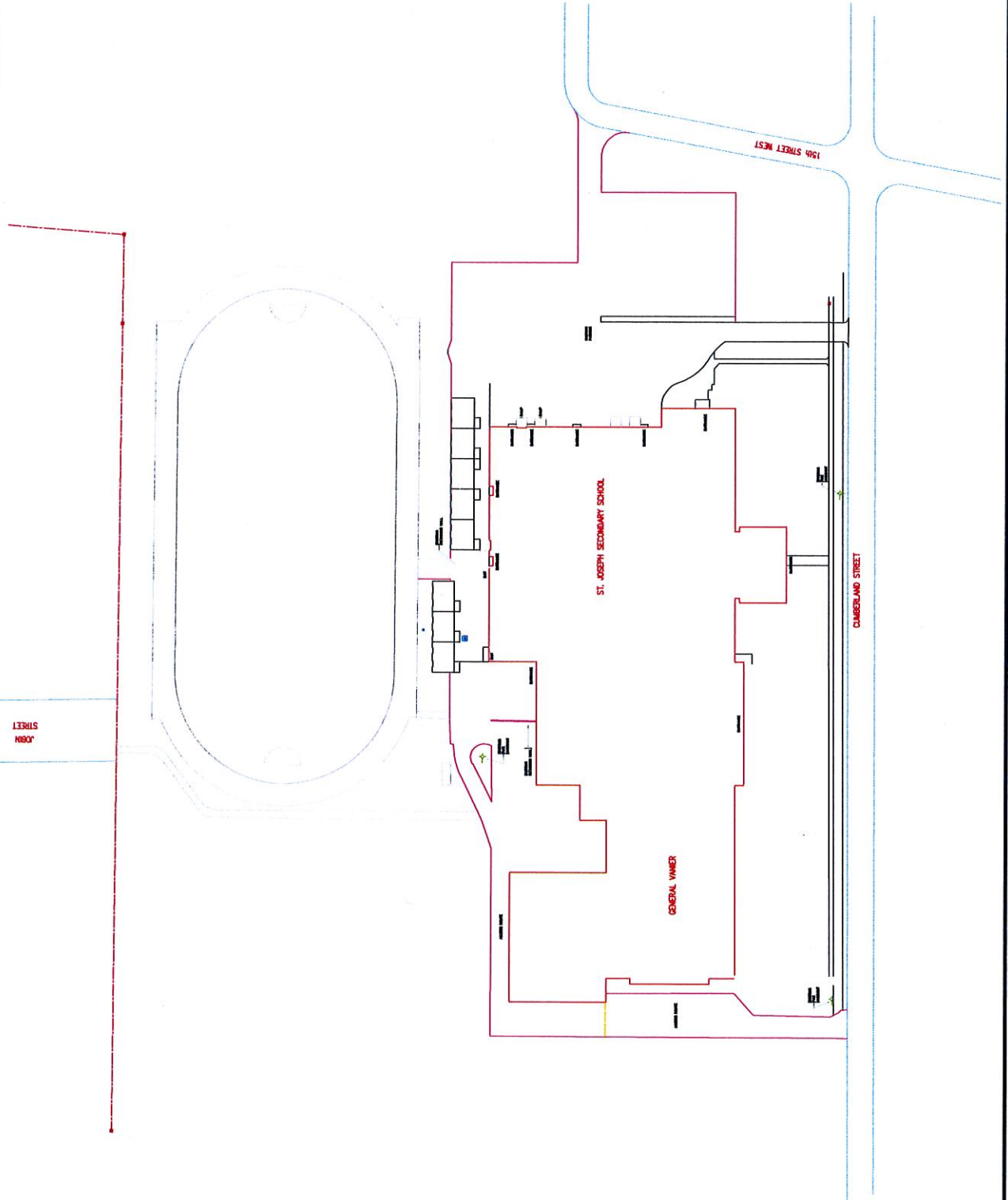
### TEN-YEAR ENROLMENT PROJECTIONS AND CAPACITY UTILIZATION

Ten-year Enrolment and Capacity Utilization Projections	See Schedule 11
---	-----------------

### OTHER SCHOOL USE PROFILE

Current Non-School Programs or co-located within School	No
- Rent Being Collected	n/a
- Operating at Full-Cost Recovery	n/a
Community Use of the School (Permits)	Yes - 60
- Rent Being Collected	Yes - \$760
- Operating at Full-Cost Recovery	No
Before and After School Program	No
- Rent Being Collected	No
- Operating at Full-Cost Recovery	No
Lease Terms at the School	n/a
- Rent Being Collected	No
- Operating at Full-Cost Recovery	No
Factors of a Suitable Facility for Community Planning Partnership	<p>- Facilities utilized at 60% or less for the past 2 consecutive years and/or have had 200 or more unused pupil places the last 2 years</p> <p>- Facilities projected to be utilized 60% or less for the next 5 years</p> <p>- Facility has not been designated as surplus space under Ontario Regulation 444/98</p> <p>- Space not required for Board programming or other uses</p>
Does the school meet the above Board criteria	No
Current Community Planning Partnerships	n/a
- Rent Being Collected	n/a
- Operating at Full-Cost Recovery	n/a





Project Title:

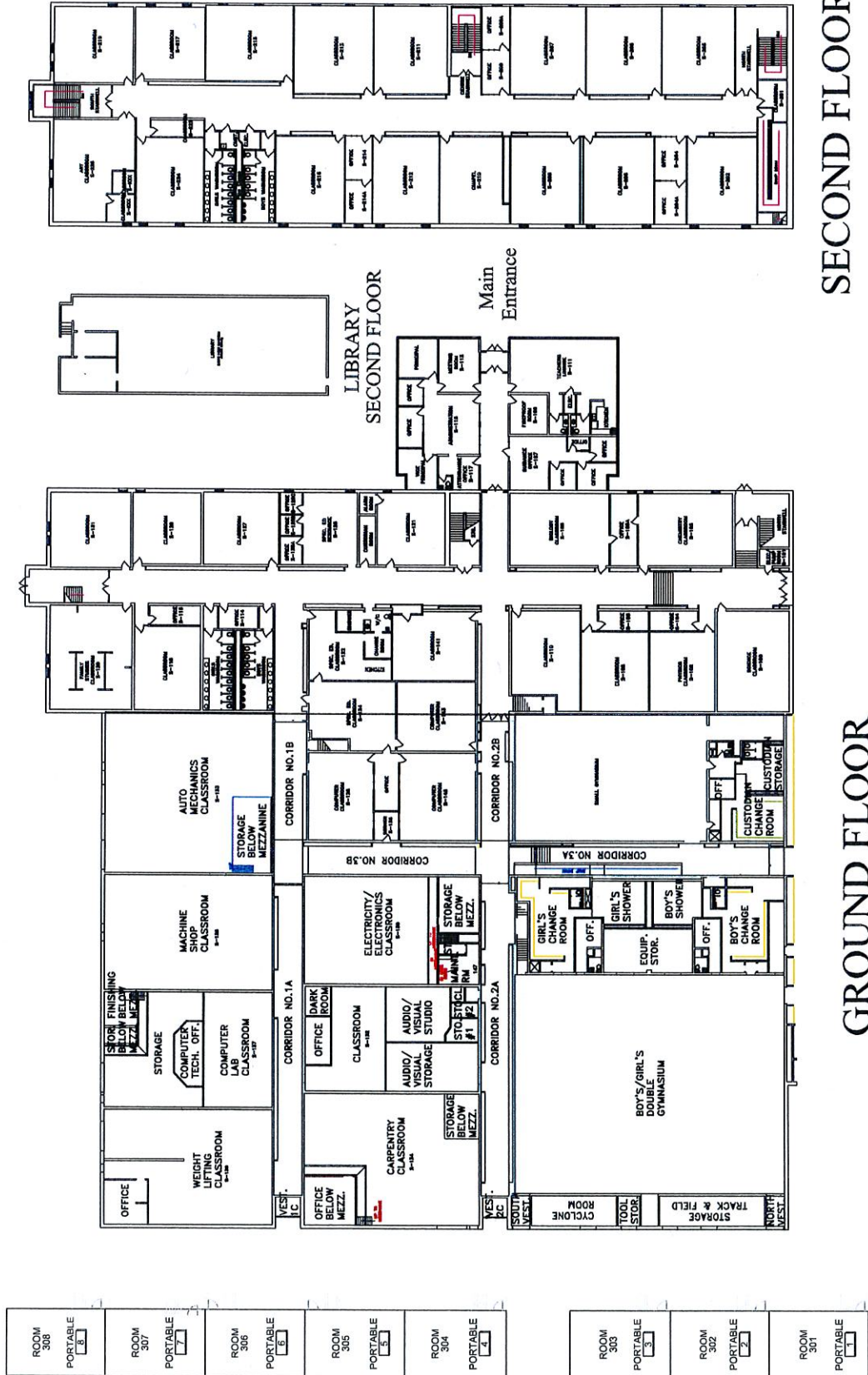
ST. JOSEPH'S C.S.S.  
1500 A Cumberland Street  
Cornwall, Ontario  
K6J 5V9

Drawing Title:

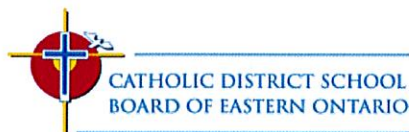
TCPS Floor Plan

Date: November 03, 2010

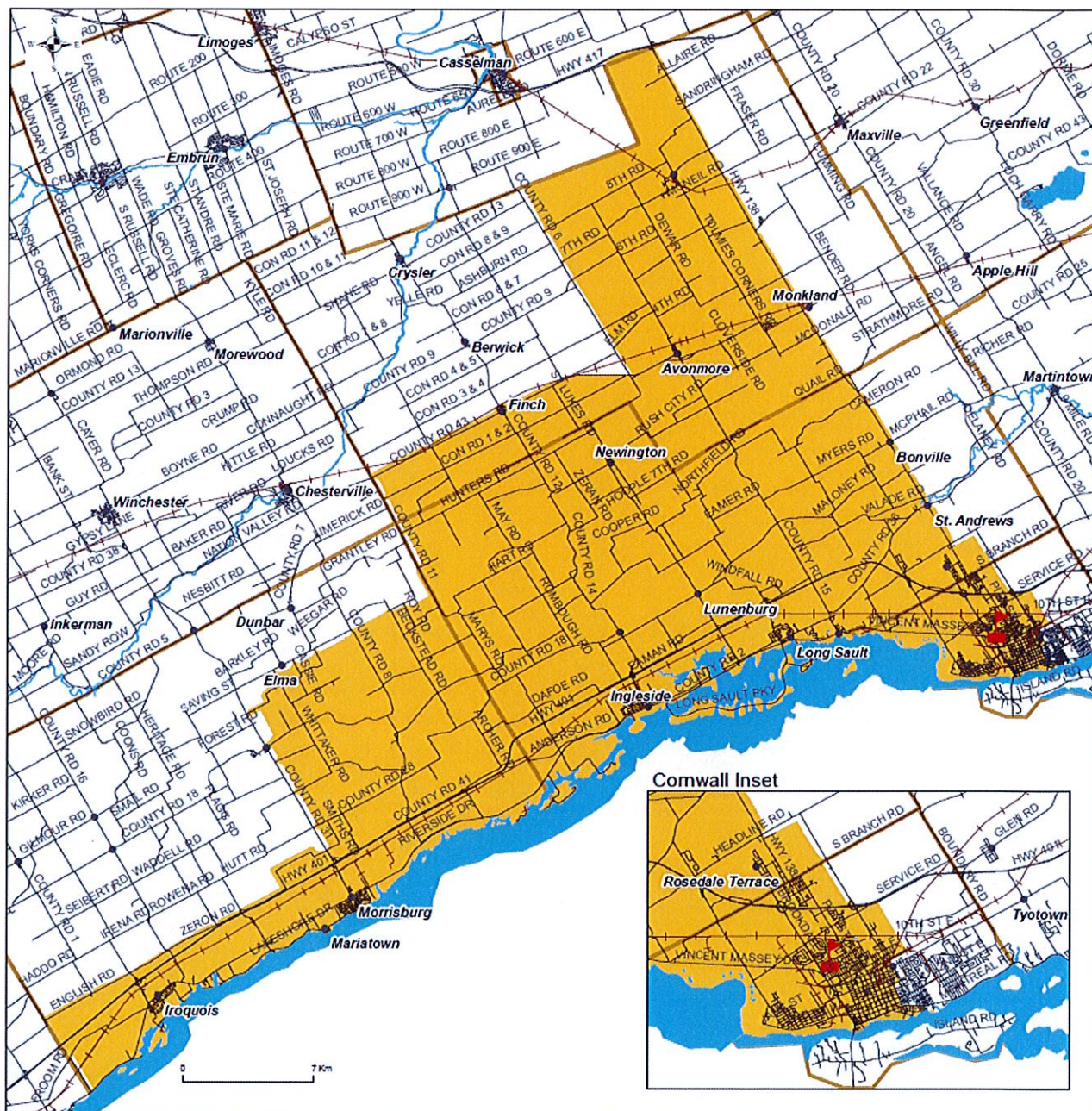
Drawn By: D.T.







## St. Joseph Catholic Secondary School Grade 9-12 Attendance Boundary

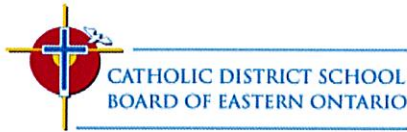


Student Transportation of Eastern Ontario, September 2016  
Map is for illustrative purposes only.  
Please use the School Locator Tool to  
determine the school of attendance by civic address  
found on the STEO Website at <http://www.steo.ca>

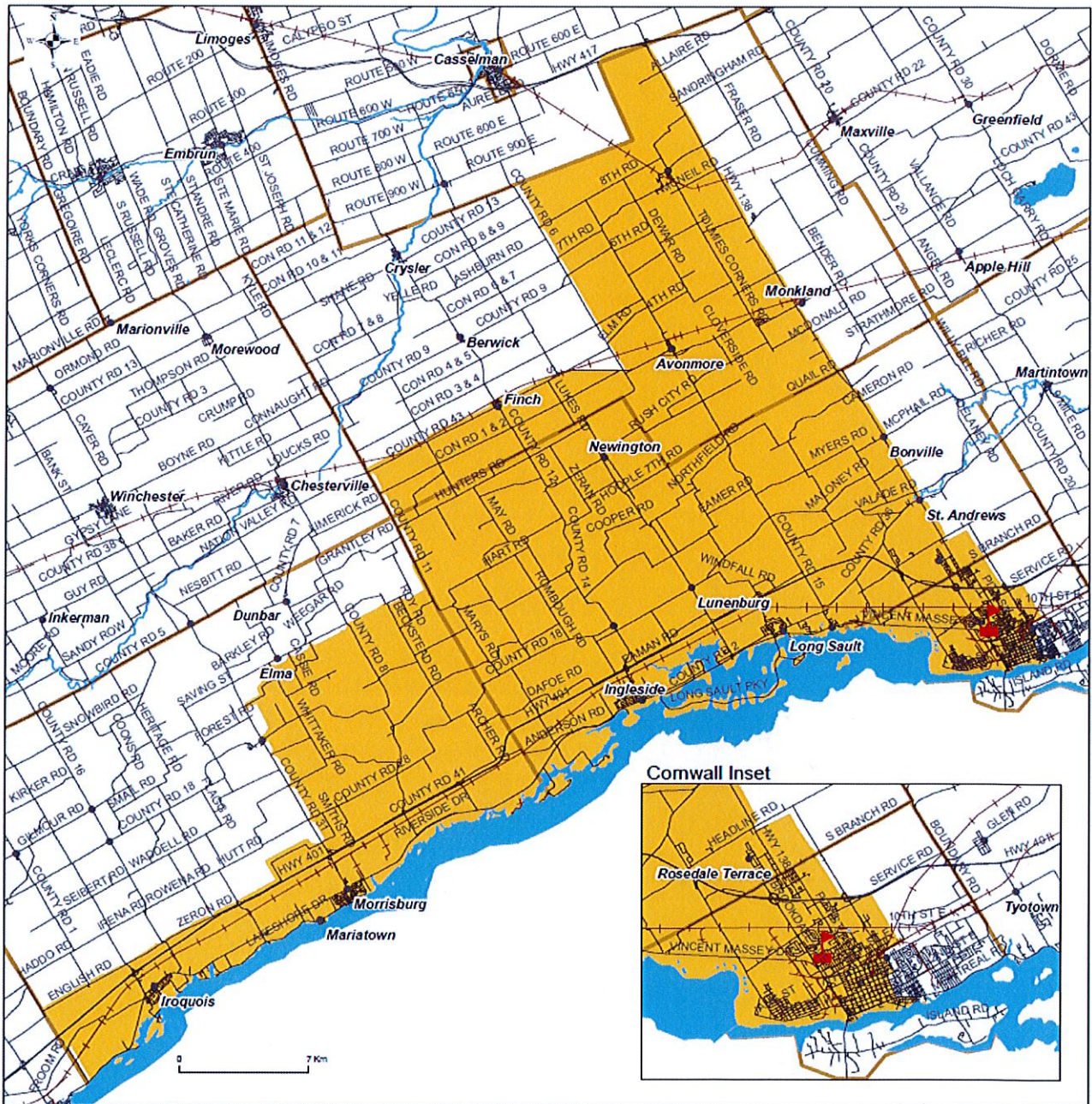


St. Joseph Catholic Secondary School  
1500A Cumberland St.  
Cornwall, ON  
K6J 5V9  
Phone: 613-932-0349





## St. Joseph Catholic Secondary School Grade 9-12 Attendance Boundary



Student Transportation of Eastern Ontario, September 2016  
Map is for illustrative purposes only.  
Please use the School Locator Tool to  
determine the school of attendance by civic address  
found on the STEO Website at <http://www.steo.ca>



St. Joseph Catholic Secondary School  
1500A Cumberland St.  
Comwall, ON  
K6J 5V9  
Phone: 613-932-0349



**ST. JOSEPH'S CATHOLIC SECONDARY SCHOOL - 1500A CUMBERLAND STREET**



ZONING: RESIDENTIAL 20 (RES 20)

OFFICIAL PLAN DESIGNATION: INSTITUTIONAL (INST.)

Schedule 6 St. Joseph CSS Room Summary from SFIS Permanent Space Room Summary						
Room #	Space Type		Current Use			Loading
226	Art Room		Art			21.0
210	Chapel		Chapel			-
128	Computer Room		Computers			21.0
132	Computer Room		Computers			21.0
145	Computer Room		Computers			21.0
110	Classroom		Classroom			21.0
118	Classroom		Classroom			21.0
121	Classroom		Classroom			21.0
127	Classroom		Classroom			21.0
129	Classroom		Classroom			21.0
131	Classroom		Classroom			21.0
141	Classroom		Classroom			21.0
202	Classroom		Classroom			21.0
203	Classroom		Classroom			21.0
205	Classroom		Classroom			21.0
206	Classroom		Classroom			21.0
207	Classroom		Classroom			21.0
208	Classroom		Classroom			21.0
211	Classroom		Classroom			21.0
212	Classroom		Classroom			21.0
213	Classroom		Classroom			21.0
215	Classroom		Classroom			21.0
216	Classroom		Classroom			21.0
217	Classroom		Classroom			21.0
219	Classroom		Classroom			21.0
224	Classroom		Classroom			21.0
139	Exercise Room		Exercise			-
120	Family Studies		Family Studies			21.0
529	Gymnasium Multiple		Gymnasium			21.0
528	Gymnasium		Gymnasium			-
	Library Resource Centre		Library Resource			-
410	Music Room		Music (instrumental)			21.0
100	Science Room		Science			21.0
108	Special Ed.		Special Education			9.0
122	Special Ed.		Special Education			9.0
124	Special Ed.		Special Education			9.0
125	Special Ed.		Special Education			9.0
137	Special Ed.		Special Education			9.0
143	Special Ed.		Special Education			9.0
102	Science Laboratory		Science			21.0
105	Science Laboratory		Science			21.0
103	Science Laboratory		Science Laboratory			21.0
111	Staff Work Rm/Lounge		Staff Work/Lounge			-
130	Technical/Vocational		Technical/Vocational			21.0
133	Technical/Vocational		Technical/Vocational			21.0
134	Technical/Vocational		Technical/Vocational			21.0
135	Technical/Vocational		Technical/Vocational			21.0
2015-16 OTG						810.0
Non-Permanent Space Room Summary						
Room #	Space Type		Current Use			Loading
5	Portable		Classroom			21.0
6	Portable		Classroom			21.0
7	Portable		Other			-
2	Portable		Classroom			21.0
4	Portable		Other			-
1	Portable		Classroom			21.0
3	Portable		Classroom			21.0
8	Portable		Other			-
2015-16 OTG						105.0



St. Joseph CSS - Schedule 7 Ten-Year Renewal History		
Brief Description	Year	Cost
Replacement [D502002 Lighting Equipment - St-Jos_Orig-bldg_hallways]	2009	\$153,089
Replacement [C3020 Floor Finishes - carpets - St-Jos - Rooms in Original-Building]	2009	\$30,716
Replacement [C3020 Floor Finishes - St-Jos_Orig.bldg.hallways]	2009	\$40,955
Replacement [D303001 Chilled Water Systems - Original Building]	2011	\$156,841
Replacement [C302005 Carpeting - St. Joseph's CSS - Addition 2 - Rooms 206, 207, 211 & 224]	2012	\$26,162
Repair [D30 St. Joseph's CSS - Heat Exchanger on RTU #3]	2012	\$5,660
Replacement [E202005 St. Joseph's CSS - Movable Multiple Seating - Large Gym - Phase II]	2012	\$31,138
Replacement [F105002 St. Joseph's CSS - Building Automation System]	2012	\$34,266
Replacement [C3020 Floor Finishes - St. Joseph's CSS - Addition 1 - Corridor, Classrooms 202, 203 & 208]	2013	\$63,288
Replacement [C3020 SJSS - Floor Finishes - Addition 1 - Rooms 204, 204A, 205, 209, 209A, 213, 214 & 214A]	2014	\$17,418
Replacement [G50 SJSS - Rubber Track Material Material for Long Jump Pits]	2014	\$29,831
<b>Cummulative Cost</b>		<b>\$589,364</b>

**St. Joseph CSS - Schedule 8**  
**Projected Five-Year Renewal Needs by Priority**

Year	Brief Description	Priority	Cost	Cummulative Cost
2016	Replacement [D503001 GVSS - Fire Alarm Systems - Original Building & Add1]	Urgent	\$275,600	\$ 275,600
2016	Replacement [D503001 SJSS - Fire Alarm Systems - Original Building & Add1]	Urgent	\$275,600	\$ 551,200
2016	Replacement [D509002 GVSS - Emergency Lighting & Power - Original & Addition1]	Urgent	\$95,400	\$ 646,600
2016	Replacement [D30 SJSS - HVAC - Addition 1 - 7 Roof Top Units]	Urgent	\$233,200	\$ 879,800
2016	Replacement [D304003 SJSS - Heating/Chilling water distribution systems - Original Building]	Urgent	\$445,200	\$ 1,325,000
2015	Study [Heating/Chilling water distribution systems - Original Building]	Urgent	\$10,600	\$ 1,335,600
2016	Replacement [D304003 GVSS - Heating/Chilling water distribution systems - Original Building]	Urgent	\$689,000	\$ 2,024,600
2016	Replacement [D501002 GVSS - Secondary - Original Building]	Urgent	\$84,800	\$ 2,109,400
2016	Replacement [B3010 Roof Coverings - Original Building - Area B, C, D, E]	Urgent	\$965,024	\$ 3,074,424
2016	Replacement [D501002 SJSS - Secondary - Transformers - Original Building]	Urgent	\$63,600	\$ 3,138,024
2015	Replacement [G204002 Retaining Walls - Site]	High	\$106,000	\$ 3,244,024
2016	Replacement [Hydraulic Elevator]	High	\$159,000	\$ 3,403,024
2016	Major Repair [Exterior Walls - Original Building]	High	\$37,100	\$ 3,440,124
2016	Replacement [D302005 GVSS - Auxiliary Equipment - Original Building]	High	\$12,720	\$ 3,452,844
2016	Replacement [B2030 Exterior Doors - Original Building]	High	\$154,018	\$ 3,606,862
2015	Replacement [D304007 GVSS - Fume Hoods]	High	\$47,700	\$ 3,654,562
2016	Replacement [D502002 Lighting Equipment - Original & Addition 1]	High	\$48,760	\$ 3,703,322
2016	Replacement [D3060 GVSS - Controls & Instrumentation - Original Building]	High	\$528,940	\$ 4,232,262
2016	Replacement [D502002 GVSS - Lighting Equipment - Original Building]	High	\$839,520	\$ 5,071,782
2016	Replacement [D502002 Lighting Equipment - Original Building]	High	\$120,840	\$ 5,192,622
2016	Replacement [D502002 Lighting Equipment - Original Building - Site Lighting]	High	\$39,220	\$ 5,231,842
2015	Replacement - B203004 Overhead and Roll-up Doors	High	\$10,600	\$ 5,242,442
2016	Major Repair - B102004 Canopies	High	\$37,100	\$ 5,279,542
2017	Replacement [D501003 GVSS - Main Switchboards - Original Building]	High	\$385,840	\$ 5,665,382
2016	Replacement [D2010 GVSS - Plumbing Fixtures - Original Building]	High	\$169,600	\$ 5,834,982
2016	Replacement [D2020 GVSS - Domestic Water Distribution - Original Building]	High	\$31,800	\$ 5,866,782
2017	Replacement [E201002 SJSS - Window Treatment - Addition 1]	High	\$26,500	\$ 5,893,282
2016	Replacement [D2010 SJSS - Plumbing Fixtures - Original Building]	High	\$84,800	\$ 5,978,082
2016	Replacement [D2020 GVSS - Plumbing Piping - Original Building]	High	\$1,187,200	\$ 7,165,282
2015	Study [D2020 GVSS - Plumbing Piping - Original Building]	High	\$10,600	\$ 7,175,882
2016	Major Repair [C3020 Floor Finishes - Original Building]	High	\$10,600	\$ 7,186,482
2016	Replacement [C3020 Floor Finishes]	High	\$71,974	\$ 7,258,456
2016	Replacement [C3020 Floor Finishes - Addition 1]	High	\$44,944	\$ 7,303,400
2017	Replacement [B3010 Roof Coverings - Sections 1.4, 1.5, 2.0 & 2.1]	High	\$700,000	\$ 8,003,400
2017	Replacement [B3010 Roof Coverings - Sections 1.02 & 2.2]	High	\$300,000	\$ 8,303,400
2016	Major Repair [C1030 Fittings]	High	\$65,932	\$ 8,369,332
2016	Replacement [D304007 SJSS - Exhaust Systems - Original Building & Add1]	High	\$95,824	\$ 8,465,156
2016	Replacement [C1030 Fittings - Original Building]	High	\$26,500	\$ 8,491,656
2016	Replacement [D304007 GVSS - Exhaust Systems - Original Building]	High	\$68,900	\$ 8,560,556
2016	Replacement [D503004 GVSS - Public Address Systems - Original Building]	High	\$111,300	\$ 8,671,856
2016	Replacement [G2020 Parking Lots - Site]	High	\$477,000	\$ 9,148,856
2016	Replacement [G2010 Roadways - Site]	High	\$316,834	\$ 9,465,690
2016	Replacement [C303006 SJSS - Ceiling Finishes]	High	\$160,802	\$ 9,626,492
2016	Replacement [C3010 Wall Finishes - Original Building]	High	\$10,600	\$ 9,637,092
2016	Replacement [F106005 SJSS - Board Based Technology - Large (x7) - Original Building]	High	\$300,000	\$ 9,937,092
2016	Replacement [F106001 SJSS - Double/Large Gymnasium - Original Building]	High	\$150,000	\$ 10,087,092
2016	Replacement [F106002 SJSS - Single Gymnasium - Original Building]	High	\$100,000	\$ 10,187,092
2016	Replacement - [C103099 Other Interior specialties]	High	\$13,250	\$ 10,200,342
2017	Replacement [D3060 SJSS - Controls & Instrumentation - Original Building & Add1]	High	\$424,000	\$ 10,624,342
2016	Replacement [D503006 GVSS - Clock and Program Systems - Original Building]	High	\$110,240	\$ 10,734,582
2017	Replacement [D304008 SJSS - Air Handling Units - Original Building]	High	\$318,000	\$ 11,052,582
2016	Replacement [F106003 SJSS - Library Resource Centre - Original Building]	High	\$50,000	\$ 11,102,582
2016	Replacement [F106004 SJSS - Science Laboratory (x3) - Original Building]	High	\$225,000	\$ 11,327,582
2017	Replacement [D304008 GVSS - Air Handling Units - Original Building]	High	\$795,000	\$ 12,122,582
2017	Replacement [E201002 SJSS - Window Treatment - Original]	Medium	\$26,500	\$ 12,149,082
2017	Replacement [D2020 SJSS - Domestic Water Distribution - Original Building]	Medium	\$95,400	\$ 12,244,482
2015	Study [D2020 SJSS - Domestic Water Distribution - Original Building]	Medium	\$10,600	\$ 12,255,082
2017	Replacement [C3020 SJSS - Floor Finishes - Original Building - Tech & Shop Rooms]	Medium	\$41,764	\$ 12,296,846
2017	Replacement [C3020 Floor Finishes]	Medium	\$80,560	\$ 12,377,406
2017	Replacement [D502001 GVSS - Branch Wiring - Original Building]	Medium	\$1,568,800	\$ 13,946,206
2015	Study [D502001 GVSS - Branch Wiring - Original Building]	Medium	\$10,600	\$ 13,956,806
2015	Study [D502001 SJSS - Branch Wiring - Original Building]	Medium	\$10,600	\$ 13,967,406
2017	Replacement [D502001 SJSS - Branch Wiring - Original Building]	Medium	\$477,000	\$ 14,444,406
2017	Replacement [C1010 Partitions - Original Building]	Medium	\$127,200	\$ 14,571,606

Year	Brief Description	Priority	Cost	Cummulative Cost
2017	Replacement [D302002 Hot Water Boilers - Original Building]	Medium	\$477,000	\$ 15,048,606
2016	Replacement [B3010 Roof Coverings - Section 1.1]	Medium	\$300,000	\$ 15,348,606
2016	Replacement [C301005 SJSS - Painting to Walls - Original Building - Small Gymnasium & Custodial rooms]	Medium	\$5,300	\$ 15,353,906
2015	Replacement [B3010 SJSS Roof Coverings - Section 1.0 & 1.01]	Medium	\$142,000	\$ 15,495,906
2016	Replacement [D502002 Lighting Equipment - Jos_ Original Building]	Low	\$84,800	\$ 15,580,706

St. Joseph CSS - Schedule 10 Five-Year Historical Enrolment Projections and Capacity Utilization								
OTG	810							
Year	9	10	11	12	SC	Total	FTE	Utilization
11-12	195	203	219	294	28	939	928.00	114.6%
12-13	186	186	193	284	26	875	867.50	107.1%
13-14	172	187	184	231	8	782	766.58	94.6%
14-15	151	181	193	219	6	750	744.63	91.9%
15-16	161	162	184	228	13	748	739.42	91.3%

St. Joseph CSS - Schedule 11 Ten-Year Enrolment Projections and Capacity Utilization								
OTG	810							
Year	9	10	11	12	SC	Total	FTE	Utilization
16-17	149	178	173	254	11	765	765.00	94.4%
17-18	158	159	186	215	6	724	724.00	89.4%
18-19	163	159	157	223	6	708	708.00	87.4%
19-20	137	164	158	189	6	654	654.00	80.7%
20-21	160	137	162	189	6	654	654.00	80.7%
21-22	150	161	136	194	6	647	647.00	79.9%
22-23	146	151	160	163	6	626	626.00	77.3%
23-24	162	147	150	191	6	656	656.00	81.0%
24-25	163	163	146	179	6	657	657.00	81.1%
25-26	145	164	161	174	6	650	650.00	80.2%