

CATHOLIC DISTRICT SCHOOL BOARD OF EASTERN ONTARIO

Box 2222, 2755 Hwy. 43,
Kemptville, Ontario K0G 1J0
Tel: 613-258-7757
Or Toll-free: 1-800-443-4562
Fax: 613-258-5067
www.cdsbeo.on.ca

Appendix 12

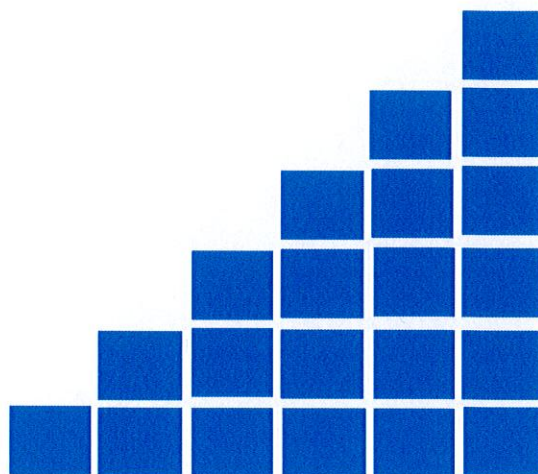
ST. MATTHEW CATHOLIC SECONDARY SCHOOL

School Information Profile

October 2016

Brent Laton
Chair

Bill Gartland
Director of Education



Educating and Inspiring...heart, mind, body and soul!



APPENDIX 12
SCHOOL INFORMATION PROFILE
ST. MATTHEW CATHOLIC ELEMENTARY & SECONDARY SCHOOL
October 4, 2016

October 7, 2021

FACILITY PROFILE		
School	St. Matthew Catholic Elementary and Secondary School	
Address	822 Marlborough Street North, Cornwall, Ontario K6H 4B4	
Date of Construction	1954	
Date and Description of Subsequent Additions	n/a	
Number of Storeys	2	
School Site Size (Acres)	1.38	
Permanent Building Area - GFA (Sq. Ft)	11,202	
Number of Portables on Site	4	
Portable Area - GFA (Sq.Ft)	3,072	
Site Plan Available	Yes - see Schedule 1	
Floor Plan Available	Yes - see Schedule 2	
Boundary Map Available	Yes - see Schedule 3 and 4 (Schedule 4 N/A)	
Official Plan/Zoning Map	Yes - see Schedule 5	
Is the School Located Adjacent to a Catholic Church	No	
Associated Parish & Distance from School	Blessed Sacrement 5KM	
Does the School have a Child Care Centre	No	
Does the School have Child Care on Site	No	
Name of Child Care Provider	n/a	
Does the School have a Before & After Child Care Program	No	
Type of Child Care	n/a	
Child Care Capacity	n/a	
Child Care Enrolment and Ages Served	n/a	
SCHOOL CAPACITY		
	Elementary	Secondary
Current Enrolment	1	107.25
School Capacity (OTG)	0	147
Surplus/(Shortage) of Pupil Places	-1	39.75
Room Summary from SFIS	see Schedule 6	
Utilization Rate - excluding Portables (%)	n/a	73.0%
Utilization Rate - including Portables (%)	n/a	46.4%
Combined Utilization Rate - excluding Portables (%)		73.6%
Combined Utilization Rate - including Portables (%)		46.9%
Total Number of Permanent Instructional Rooms in School	7	
Total Number of Portable Units on School Site	4	
Total Number of Portapak/RCM Units on School Site	0	
INSTRUCTIONAL AND SPECIALIZED CLASSROOM SPACES		
Number of Regular Classrooms	7	
Number of Portable Classrooms	4	
Number of Purpose Build Kindergarten Classrooms	n/a	
Number of Special Education Rooms	0	
Does the School have Appropriate Existing Space for:		
- Special Education	Yes	
- Literacy Resource Centre	No	
- Science and Technology Lab	No	
Total Number of Dedicated Rooms	0	
- Computer Lab	No	
- Arts Facilities	No	
Total Number of Dedicated Rooms	0	
- Gymnasium	No	
- General Purpose Room	No	
- Music Room	No	
- Assembly/Auditorium	No	
- Library	No	
- Staffroom	Yes	
- Stage	No	
- Chapel	No	
- Kitchen	Yes - Hospitality Pgm	
- Cafeteria	No	

OUTDOOR PLAY AREA AND GREEN SPACE	
Area of Green Space (Sq ft)	22,974
Area of Hard Surfaced Play Area (Sq ft)	4,346
Total Number of Playfields	1
List of Outdoor Facilities (e.g. tracks, basketball court, tennis court, etc.)	long jump pit, shot put pit

FACILITY CONDITION	
Definition of what the FCI Represents	- FCI is determined by the ratio between the five-year renewal needs and the replacement value for the school; a higher FCI indicates a higher cost to repair the facility
Replacement Value (\$) (A)	\$ 4,457,010
Five-year Renewal Needs (\$) (B)	\$ 776,603
Facility Condition Index (FCI) of School (B) / (A)	17.4%
Board's Average FCI	17.7%
Total Number of Parking Spaces	19
Total Number of Accessible Parking Spaces	1
Is there an Adequate Amount of Parking Provided	Additional 16 parking spaces on the gravel at south side of school

ACCESSIBILITY	
Is the School Universally Accessible	No
Does the School have an Operating Elevator/Lift	No
Do Students have Access to Barrier Free Washroom	No
Are Student Washrooms Accessible on Each Level of the Building	No
Are the Designated Change rooms Accessible to the Gym	No
Accessibility Audit Cost to Retrofit	\$ 372,437

TEN-YEAR HISTORY OF MAJOR FACILITY IMPROVEMENTS	
Ten-year History of Major Facility Improvements	see Schedule 7

PROJECTED FIVE-YEAR FACILITY RENEWAL NEEDS	
Five-year Projected Facility Renewal Needs	see Schedule 8
FINANCIAL*	
Expenditures on School Staff: Teaching (\$)	\$ 1,175,063
Expenditures on School Staff: Non-Teaching (\$)	\$ 497,752
Expenditures on School Utility (\$)	\$ 33,974
- Total	\$ 1,706,789
- Per Square Foot (including Portables)	\$ 119.57
- Per Student	\$ 15,767.10
Grant Revenues for School Administration (identify any loss of revenues) (\$)	Receive benchmark level funding as a combined school for 0.68 FTE Principal, 0 FTE Vice-Principal and 1.11 FTE Secretaries. Benchmark Salary & Benefits for Principal is \$136,734. Benchmark Salary & Benefits for Vice-Principal is \$125,285 and Benchmark Salary & Benefits for Secretary is \$56,352. Any school closure would result in loss of benchmark level funding for Principal and Vice-Principal. Level of School Secretarial funding depends on enrolment at new location for displaced students.
Grant Revenues for School Operations (identify any loss of revenue) (\$)	Loss of grant revenue is tied to calculated square footage requirement based on enrolment and includes School Operations, Top-up Funding and School Renewal. The school is receiving 76.4% of the maximum operations grants.
What is the impact of this Schools Closure on Facility Operating and Capital Budgets	Total facility operations grants would be reduced by approximately \$121,724. Five-year capital renewal needs totalling approximately \$776,603 would be eliminated.
What is the impact of this School Remaining Open on Facility Operating and Capital Budgets	The costs associated with operating and maintaining this facility exceed the level of funding generated by approximately \$82,328. Five-year renewal needs totalling \$776,603 would be required to maintain the facility.

* Numbers are approximate

2015-16 TRANSPORTATION		
Bus Loading Zone	No	
Average Distance to School for Students (KM)	9,277 Metres	
Number of Students Bussed to School	70	
Percentage of Students that are Eligible for Transportation (%)	70.0%	
Number of Students Not Eligible for Transportation	30	
Percentage of Students that are Not Eligible for Transportation (%)	30.0%	
Shortest Bus Ride Time to School (minutes)	3	
Longest Bus Ride Time to School (minutes)	82	
Average Length of Bus Ride Time to School (minutes)	46	
Number of Intermediate 7 - 8 Students out of Boundary and Percentage of Total	0	0.0%
Number of Senior 9 - 12 Students out of Boundary and Percentage of Total	0	0.0%
Total Number of Students out of Boundary and Percentage of Total	0	0.0%
Aggregate Cost to Transport Students to School (\$) *	\$	12,600
Cost per Student Bussed to School (\$)	\$	180.00
*additional costs included with St. Joseph CSS and Holy Trinity CSS		

INSTRUCTIONAL PROFILE 2016-17 STAFFING - TEACHING	
Number of Classroom Teachers	1.96
Number of Special Education Teachers	9.25
Number of Library/Guidance Teachers	0.50
Total Teaching Staff	11.71

2016-17 STAFFING - NON-TEACHING	
Full-Time Principal (FTE)	0.70
Full-Time Vice-Principal (FTE)	0.30
Secretarial Full-Time Equivalent (FTE)	1.00
Custodial Full-Time Equivalent (FTE)	0.75
Number of Full-Time Designated Early Childhood Educators (ECE)	n/a
Number of Full-Time Educational Assistants (EA)	6.00
Total Non-Teaching Staff	8.75

2016-17 SCHOOL ORGANIZATION	
Grade Configuration	7-12
Grade Organization (Number of Classes)	n/a
Total Number of Classes	n/a
Total Number of Split Classes	n/a
Split Classes (%)	n/a

PROGRAM OFFERINGS AND SPECIALIZED SERVICES	
Arts Program	No
Extended French	No
French Immersion	No
Information Technology to Support Curriculum	Yes
Guidance Counselling	Yes
Religious & Family Life Programs	Yes
Career Education Programs (e.g. Co-op Placement)	Yes
Early Literacy Resources	No
Culturally Inclusive Programs	Yes
English-as-a-Second Language Programming	No
Special Education Classes	Yes
Special Education Resources	Yes
Programs/Support for Students at Risk	Yes
Other Specialized Programs (identify)	SHSM - Hospitality & Tourism, Construction, Hairstyling, Dual Credit Program, OYAP
Does the School have Remedial Programs Onsite During the Day and After School	Yes - Comfort Zone - with Laurencrest
Does the School have Access to these Programs in Nearby Facilities	Yes
Does the School Location Easily Attract Parent/Family/Community Volunteers	Yes

EXTRACURRICULAR ACTIVITIES & SPECIAL EVENTS

School Plays	No
Dance/Socials	No
Religious Retreats	Yes
Graduation Celebrations	Yes
Athletics	Yes - track & field, tennis
Clubs	Yes
Leadership/Student Council	Yes
Fundraising	Yes

STUDENT ACHIEVEMENT - EQAO - 2014-15

	School / Board	
OSSLT - First Time Eligible Students - Fully Participating Students	n/a	
	Applied - School/Board	Academic - School/Board
Math - Grade 9	n/a	n/a

PREVIOUS FIVE-YEAR ENROLMENT AND CAPACITY UTILIZATION

Historical Five-year Enrolment and Capacity Utilization	See Schedule 10
---	-----------------

TEN-YEAR ENROLMENT PROJECTIONS AND CAPACITY UTILIZATION

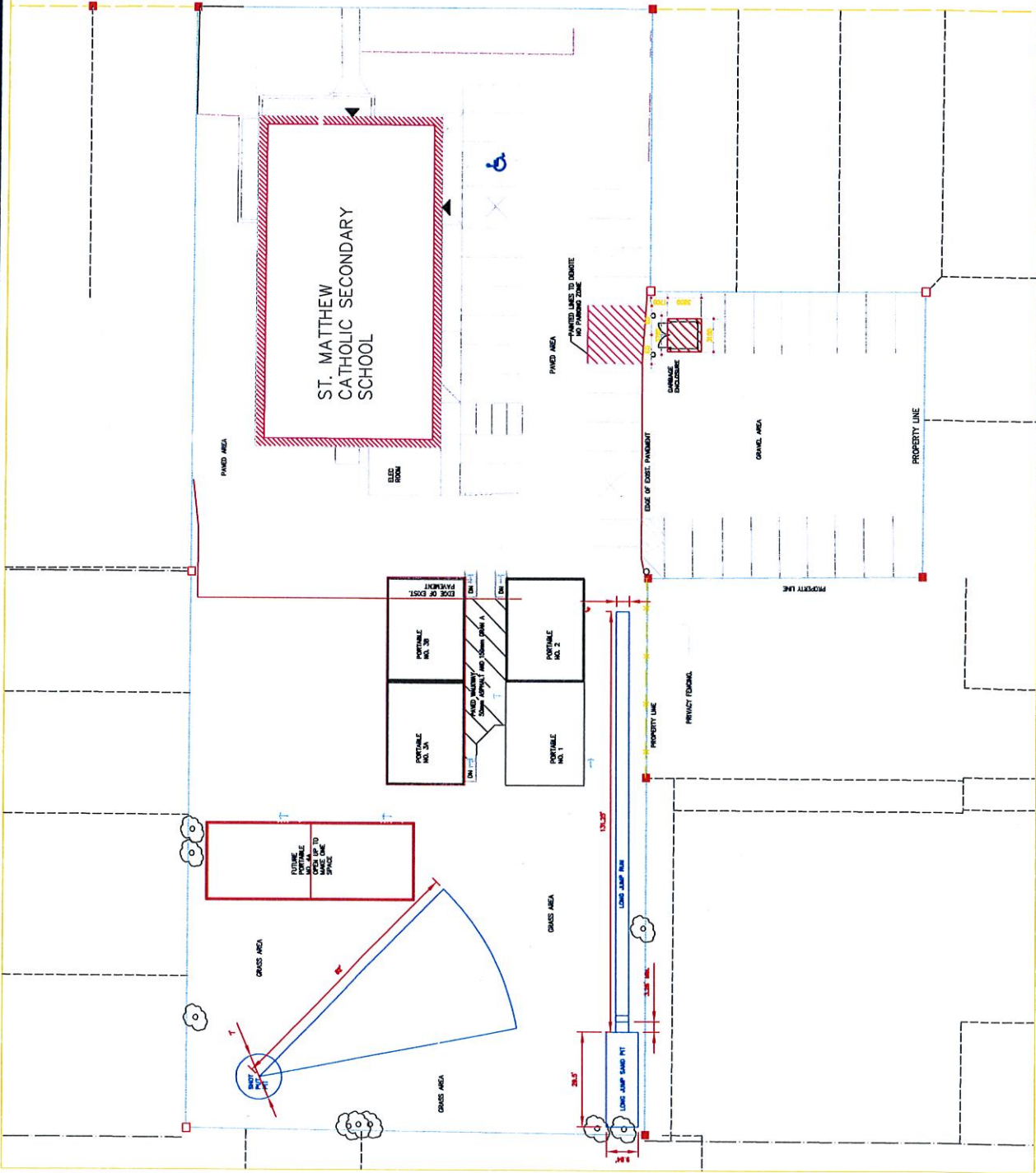
Ten-year Enrolment and Capacity Utilization Projections	See Schedule 11
---	-----------------

OTHER SCHOOL USE PROFILE

Current Non-School Programs or co-located within School	No
- Rent Being Collected	n/a
- Operating at Full-Cost Recovery	n/a
Community Use of the School (Permits)	Yes - 1
- Rent Being Collected	No
- Operating at Full-Cost Recovery	No
Before and After School Program	No
- Rent Being Collected	No
- Operating at Full-Cost Recovery	No
Lease Terms at the School	n/a
- Rent Being Collected	No
- Operating at Full-Cost Recovery	No
Factors of a Suitable Facility for Community Planning Partnership	<p>- Facilities utilized at 60% or less for the past 2 consecutive years and/or have had 200 or more unused pupil places the last 2 years</p> <p>- Facilities projected to be utilized 60% or less for the next 5 years</p> <p>- Facility has not been designated as surplus space under Ontario Regulation 444/98</p> <p>- Space not required for Board programming or other uses</p>
Does the school meet the above Board criteria	No
Current Community Planning Partnerships	n/a
- Rent Being Collected	n/a
- Operating at Full-Cost Recovery	n/a

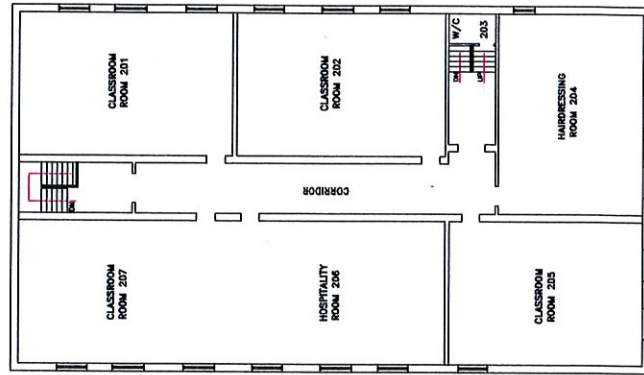
North Arrow:	
Project Title: St. Matthew C.S.S. 822 Marlborough Street N. Cornwall, Ontario K6H 4B4	
Drawing Title: Site Plan	
Date: Feb-20, 2015	Dwg: SP
Drawing By: D.T.	Rev.#: 0

MARLBOROUGH STREET

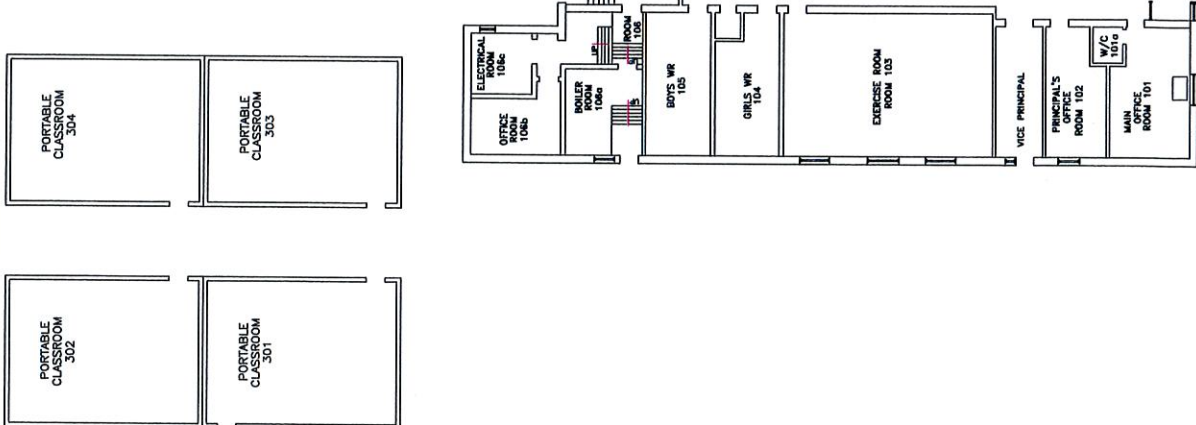


Project Title: St. Matthew's Catholic Secondary School 822 Marlborough Street, North Cornwall, Ontario K6H 4B4	
Drawing Title: FLOOR PLAN	
Date: August 28, 2014	Dwg: FP1
Drawn By: D.T.	Rev.#: 0

Second Floor



Ground Floor



[illegible]

 St. Matthew Catholic Secondary School
822 Marlborough St. N.
Cornwall, ON
K6H 4B4
Phone: 613-930-9928

ST. MATTHEW CATHOLIC SECONDARY SCHOOL - 822 MARLBOROUGH STREET, NORTH



ZONING: RESIDENTIAL 20 (RES 20)

OFFICAL PLAN DESIGNATION: URBAN RESIDENTIAL (U. RES)

Schedule 6 St. Matthew CSS Room Summary from SFIS Permanent Space Room Summary			
201	Classroom	Classroom	21.0
202	Classroom	Classroom	21.0
205	Classroom	Classroom	21.0
207	Classroom	Classroom	21.0
103	Exercise Room	Exercise	-
110	Staff Work Room/Lounge	Staff Work/Lounge	-
107	Technical/Vocational	Technical/Vocational	21.0
204	Technical/Vocational	Technical/Vocational	21.0
206	Technical/Vocational	Technical/Vocational	21.0
2015-16 OTG			147.0
Non-Permanent Space Room Summary			
Room #	Space Type	Current Use	Loading
301	Portable	Classroom	21.0
302	Portable	Classroom	21.0
303	Portable	Classroom	21.0
304	Portable	Classroom	21.0
2015-16 OTG			84.0

St. Matthew CSS - Schedule 7 Ten-Year Renewal History		
Brief Description	Year	Cost
Replace [03.1-170 Heating Piping Systems - Original Building]	2005	\$75,998
Replace convection heating units.	2005	\$109,824
Replace [04.5-040 Communication Systems - Original Building]	2007	\$14,473
Replace [04.3-010 Interior Lighting - Original Building] - Retrofit	2009	\$19,932
Replacement [D502002 Lighting Equipment - Original Building]	2009	\$29,089
Install [06.7 Other energy-related equipment - Lighting Occupancy Sensors]	2009	\$6,750
Replacement [F1050 Special Controls & Instrumentation - Lighting Occupancy Sensors] Install	2009	\$8,778
Replacement [D302002 Hot Water Boilers - Original Building - 2 boilers]	2011	\$139,418
Replacement [B2030 Exterior Doors - Front Entrance]	2013	\$14,878
Replacement [C103001 Toilet Partition - Washrooms # 104 & 105]	2013	\$42,000
Replacement [C103008 Counters - Washrooms # 104 & 105]	2013	\$6,500
Replacement [C302001 Tile Floor Finishes - Washrooms # 104 & 105]	2013	\$50,000
Replacement [C3020 Floor Finishes - Addition 2 - Rooms 201 & 204]	2013	\$7,773
Replacement [C302001 Tile Floor Finishes - Washrooms # 104 & 105]	2013	\$30,000
Replacement [C3030 Ceiling Finishes - Washrooms # 104 & 105]	2013	\$7,000
Replacement [D2010 Plumbing Fixtures - Toilets, Urinals & Sinks in Washrooms # 104 & 105]	2013	\$16,000
Replacement [D304007 Exhaust Systems - Washrooms # 104 & 105]	2013	\$2,000
Paving - Front Entrance Walkway Replacement [G2030 Pedestrian and Asphalt Ramp]	2013	\$8,000
Replacement [C10 Interior Renovation]	2014	\$185,994
Renovations [C3020 Floor Finishes - Rooms 108 & 206 - Original Building]	2014	\$20,000
Cummulative Cost		\$794,407

St. Matthew CSS - Schedule 8				
Projected Five-Year Renewal Needs by Priority				
Year	Brief Description	Priority	Cost	Cummulative Cost
2016	Replacement [D2020 Domestic Water Distribution - Original Building]	High	\$68,349	\$ 68,348.80
2016	Study [D2020 Domestic Water Distribution - Original Building]	High	\$11,024	\$ 79,372.80
2017	Replacement [B3010 Roof Coverings - Original Building - complete new roof]	High	\$115,284	\$ 194,656.80
2016	Replacement - Millwork Fittings - Original Building	High	\$46,852	\$ 241,508.80
2016	Study [D502001 Branch Wiring - Original Building]	High	\$11,024	\$ 252,532.80
2016	Replacement [D502001 Branch Wiring - Original Building]	High	\$46,301	\$ 298,833.60
2016	Replacement - Interior Doors & Hardware - Original Building	High	\$14,331	\$ 313,164.80
2016	Replacement [G2020 Parking Lots - Site]	Medium	\$15,000	\$ 328,164.80
2015	Replacement - Renovations [C3020 Floor Finishes - Room 102B]	Low	\$3,606	\$ 331,770.80
2019	Replacement [B2030 Exterior Doors - Original Building]	N/A	\$24,458	\$ 356,228.48
2019	Major Repair [A1010 Standard Foundations - Leakage Repair]	N/A	\$29,770	\$ 385,998.48
2019	Study [A1010 Standard Foundations - Study.]	N/A	\$7,443	\$ 393,441.76
2019	Replacement [C3020 Floor Finishes]	N/A	\$10,420	\$ 403,861.52
2019	Replacement [G2050 Landscaping]	N/A	\$37,212	\$ 441,073.76
2019	Replacement [G204001 Fencing & Gates]	N/A	\$26,794	\$ 467,867.28
2019	Replacement [C3010 Wall Finishes - ALL]	N/A	\$22,328	\$ 490,195.04
2019	Replacement [C3010 Wall Finishes - Original Building - 1st floor]	N/A	\$23,108	\$ 513,302.80
2019	Replacement [C3020 Floor Finishes - Original Building - classrooms]	N/A	\$70,047	\$ 583,349.92
2019	Replacement [C3030 Ceiling Finishes - Original Building - boiler room]	N/A	\$37,789	\$ 621,139.36
2019	Replacement [C3030 Ceiling Finishes - Original Building - complete school]	N/A	\$115,836	\$ 736,975.60
2019	Replacement [C1030 Fittings - Original Building - boys]	N/A	\$4,587	\$ 741,563.04
2019	Replacement [C201001 Interior Stair Construction - Original Building]	N/A	\$12,712	\$ 754,274.96
2019	Replacement [C1030 Fittings - Original Building]	N/A	\$22,328	\$ 776,602.72

St. Matthew CSS - Schedule 10														
Five-Year Historical Enrolment Projections and Capacity Utilization														
Elementary						Secondary								
OTG	0					OTG	147							
Year	7	8	SC	Total	Utilization	Year	9	10	11	12	SC	Total	FTE	Utilization
11-12			4	4	n/a	11-12			2	5	87	94	91.75	65.1%
12-13			6	6	n/a	12-13					102	102	97.50	70.4%
13-14			4	4	n/a	13-14					113	113	111.00	78.2%
14-15			3	3	n/a	14-15					120	120	117.75	82.1%
15-16			1	1	n/a	15-16					111	111	107.25	73.6%

St. Matthew CSS - Schedule 11														
Ten-Year Enrolment Projections and Capacity Utilization														
Elementary						Secondary								
OTG	0					OTG	147							
Year	7	8	SC	Total	Utilization	Year	9	10	11	12	SC	Total	FTE	Utilization
16-17			2	2	n/a	16-17					133	133	133.00	91.8%
17-18			2	2	n/a	17-18					133	133	133.00	91.8%
18-19			2	2	n/a	18-19					133	133	133.00	91.8%
19-20			2	2	n/a	19-20					133	133	133.00	91.8%
20-21			2	2	n/a	20-21					133	133	133.00	91.8%
21-22			2	2	n/a	21-22					133	133	133.00	91.8%
22-23			2	2	n/a	22-23					133	133	133.00	91.8%
23-24			2	2	n/a	23-24					133	133	133.00	91.8%
24-25			2	2	n/a	24-25					133	133	133.00	91.8%
25-26			2	2	n/a	25-26					133	133	133.00	91.8%