

---

# **CATHOLIC DISTRICT SCHOOL BOARD OF EASTERN ONTARIO**

---

Box 2222, 2755 Hwy. 43,  
Kemptville, Ontario K0G 1J0  
Tel: 613-258-7757  
Or Toll-free: 1-800-443-4562  
Fax: 613-258-5067  
[www.cdsbeo.on.ca](http://www.cdsbeo.on.ca)

## **Appendix 7**

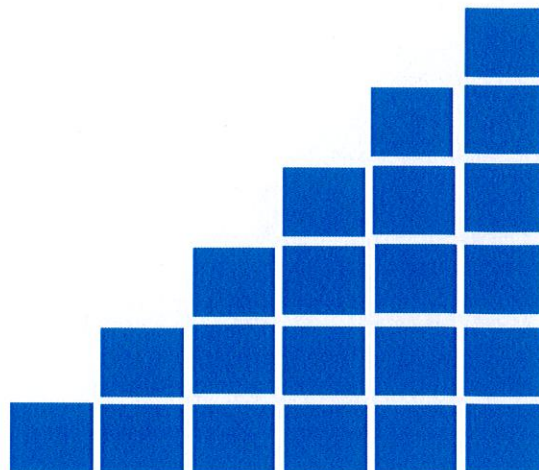
# **SACRED HEART CATHOLIC SCHOOL**

## **School Information Profile**

### **October 2016**

**Brent Laton**  
Chair

**Bill Gartland**  
Director of Education



***Educating and Inspiring...heart, mind, body and soul!***



**APPENDIX 7**  
**SCHOOL INFORMATION PROFILE**  
**SACRED HEART CATHOLIC ELEMENTARY**  
**October 4, 2016**

FACILITY PROFILE	
School	Sacred Heart Catholic Elementary
Address	1424 Aubin Avenue, Cornwall, Ontario K6J 4S2
Date of Construction	1946 Original School
Date and Description of Subsequent Additions	1975 2-Classroom Portapak
Number of Storeys	2
School Site Size (Acres)	3.24
Permanent Building Area - GFA (Sq. Ft)	25,833
Number of Portables on Site	2
Portable Area - GFA (Sq.Ft)	1,924
Site Plan Available	Yes - see Schedule 1
Floor Plan Available	Yes - see Schedule 2
Boundary Map Available	Yes - see Schedule 3 and 4
Official Plan/Zoning Map	Yes - see Schedule 5
Is the School Located Adjacent to a Catholic Church	No
Associated Parish & Distance from School	Blessed Sacrament Parish - 2 km
Does the School have a Child Care Centre	No
Does the School have Child Care on Site	Yes
Name of Child Care Provider	Mary Seguin - Where Children Grow
Does the School have a Before & After Child Care Program	Yes
Type of Child Care	Before and After Program only on instructional days
Child Care Capacity	Kindergarten (44 months to 68 months) 20 spaces, Primary Junior School Age (68 months to age 13) 45 spaces
Child Care Enrolment and Ages Served	11 Kindergarten / 39 School Age

SCHOOL CAPACITY	
Current Enrolment	233
School Capacity (OTG)	337
Surplus/(Shortage) of Pupil Places	104
Room Summary from SFIS	see Schedule 6
Utilization Rate - excluding Portables (%)	69.1%
Utilization Rate - including Portables (%)	60.8%
Total Number of Permanent Instructional Rooms in School	14
Total Number of Portable Units on School Site	0
Total Number of Portapak/RCM Units on School Site	2

INSTRUCTIONAL AND SPECIALIZED CLASSROOM SPACES	
Number of Regular Classrooms	14
Number of Portable Classrooms	2
Number of Purpose Build Kindergarten Classrooms	None - 2 modified
Number of Special Education Rooms	1
Does the School have Appropriate Existing Space for:	
- Special Education	Yes
- Literacy Resource Centre	Yes
- Science and Technology Lab	No
Total Number of Dedicated Rooms	1
- Computer Lab	Yes
- Arts Facilities	No
Total Number of Dedicated Rooms	1
- Gymnasium	Yes
- General Purpose Room	No
- Music Room	No
- Assembly/Auditorium	No
- Library	Yes
- Staffroom	Yes
- Stage	No
- Chapel	No
- Kitchen	No
- Cafeteria	No

OUTDOOR PLAY AREA AND GREEN SPACE	
Area of Green Space (Sq ft)	38,879
Area of Hard Surfaced Play Area (Sq ft)	14,412
Total Number of Playfields	n/a
List of Outdoor Facilities (e.g. tracks, basketball court, tennis court, etc.)	basketball court area

FACILITY CONDITION	
Definition of what the FCI Represents	- FCI is determined by the ratio between the five-year renewal needs and the replacement value for the school; a higher FCI indicates a higher cost to repair the facility
Replacement Value (\$) (A)	\$ 7,797,320
Five-year Renewal Needs (\$) (B)	\$ 4,201,158
Facility Condition Index (FCI) of School (B) / (A)	53.9%
Board's Average FCI	17.7%
Total Number of Parking Spaces	21
Total Number of Accessible Parking Spaces	2
Is there an Adequate Amount of Parking Provided	No

ACCESSIBILITY	
Is the School Universally Accessible	No
Does the School have an Operating Elevator/Lift	No
Do Students have Access to Barrier Free Washroom	Yes
Are Student Washrooms Accessible on Each Level of the Building	No
Are the Designated Change rooms Accessible to the Gym	No
Accessibility Audit Cost to Retrofit	\$ 402,179

TEN-YEAR HISTORY OF MAJOR FACILITY IMPROVEMENTS	
Ten-year History of Major Facility Improvements	see Schedule 7

PROJECTED FIVE-YEAR FACILITY RENEWAL NEEDS	
Five-year Projected Facility Renewal Needs	see Schedule 8

FINANCIAL*	
Expenditures on School Staff: Teaching (\$)	\$ 1,647,698
Expenditures on School Staff: Non-Teaching (\$)	\$ 433,158
Expenditures on School Utility (\$)	\$ 45,786
- Total	\$ 2,126,641
- Per Square Foot (including Portables)	\$ 76.62
- Per Student	\$ 9,845.56
Grant Revenues for School Administration (identify any loss of revenues) (\$)	Receive benchmark level funding for 1.0 FTE Principal and Secretary. Benchmark Salary & Benefits for Principal is \$125,377. Benchmark Salary & Benefits for Secretary is \$53,494. Any school closure would result in loss of benchmark level funding for Principal. Level of School Secretarial funding depends on enrolment at new location for displaced students.
Grant Revenues for School Operations (identify any loss of revenue (\$)	Loss of grant revenue is tied to calculated square footage requirement based on enrolment and includes School Operations, Top-up Funding and School Renewal. The school is only receiving approximately 69.6% of the maximum operations grants due to low enrolment.
What is the impact of this Schools Closure on Facility Operating and Capital Budgets	Total facility operations grants would be reduced by approximately \$191,935. Five-year capital renewal needs totalling approximately \$4.2 million would be eliminated.
What is the impact of this School Remaining Open on Facility Operating and Capital Budgets	The costs associated with operating and maintaining this facility exceed the level of funding generated by approximately \$18,666. Five-year renewal needs totalling more than \$4.2 million would be required to maintain the facility.

\* Numbers are approximate

2015-16 TRANSPORTATION		
Bus Loading Zone	No	
Average Distance to School for Students (KM)	1.48	
Number of Students Bussed to School	39	
Percentage of Students that are Eligible for Transportation (%)	16.7%	
Number of Students Not Eligible for Transportation	195	
Percentage of Students that are Not Eligible for Transportation (%)	83.7%	
Shortest Bus Ride Time to School (minutes)	3	
Longest Bus Ride Time to School (minutes)	33	
Average Length of Bus Ride Time to School (minutes)	15	
Number of Primary JK - 3 Students out of Boundary and Percentage of Total	55	23.6%
Number of Junior 4 - 6 Students out of Boundary and Percentage of Total	40	17.2%
Number of Intermediate 7 - 8 Students out of Boundary and Percentage of Total	9	3.9%
Total Number of Students out of Boundary and Percentage of Total	104	44.6%
Aggregate Cost to Transport Students to School (\$)	\$ 57,500.00	
Cost per Student Bussed to School (\$)	\$ 1,474.36	

INSTRUCTIONAL PROFILE	
2016-17 STAFFING - TEACHING	
Number of Classroom Teachers	11.90
Number of Prep Time Teachers	2.22
Number of Special Education Teachers	2.00
Number of Library Teachers	0.30
Number of Guidance Teachers	0.00
Total Teaching Staff	16.42

2016-17 STAFFING - NON-TEACHING	
Full-Time Principal (FTE)	1.00
Full-Time Vice-Principal (FTE)	0.00
Secretarial Full-Time Equivalent (FTE)	1.00
Custodial Full-Time Equivalent (FTE)	1.72
Number of Full-Time Designated Early Childhood Educators (ECE)	0.00
Number of Full-Time Educational Assistants (EA)	3.50
Total Non-Teaching Staff	7.22

2016-17 SCHOOL ORGANIZATION	
Grade Configuration	JK-8
Grade Organization (Number of Classes)	See Schedule 9
Total Number of Classes	12
Total Number of Split Classes	10
Split Classes (%)	83.3%

PROGRAM OFFERINGS AND SPECIALIZED SERVICES	
Arts Program	No
Extended French	No
French Immersion	Yes JK-8
Information Technology to Support Curriculum	Yes
Guidance Counselling	No
Religious & Family Life Programs	Yes
Career Education Programs (e.g. Co-op Placement)	No
Early Literacy Resources	Yes
Culturally Inclusive Programs	Yes
English-as-a-Second Language Programming	No
Special Education Classes	No
Special Education Resources	Yes
Programs/Support for Students at Risk	Yes
Other Specialized Programs (identify)	n/a
Does the School have Remedial Programs Onsite During the Day and After School	No
Does the School have Access to these Programs in Nearby Facilities	Yes
Does the School Location Easily Attract Parent/Family/Community Volunteers	Yes

**EXTRACURRICULAR ACTIVITIES & SPECIAL EVENTS**

School Plays	Yes
Dance/Socials	Yes
Religious Retreats	Yes
Graduation Celebrations	Yes
Athletics	Yes
Clubs	Yes
Leadership/Student Council	Yes
Fundraising	Yes

**STUDENT ACHIEVEMENT - EQAO - 2014-15**

	Primary - School/Board	Junior - School/Board
Reading - Level 3-4	60 / 78	82 / 81
Writing - Level 3-4	49 / 80	79 / 83
Math - Level 3-4	26 / 66	18 / 51

**PREVIOUS FIVE-YEAR ENROLMENT AND CAPACITY UTILIZATION**

Historical Five-year Enrolment and Capacity Utilization	See Schedule 10
---	-----------------

**TEN-YEAR ENROLMENT PROJECTIONS AND CAPACITY UTILIZATION**

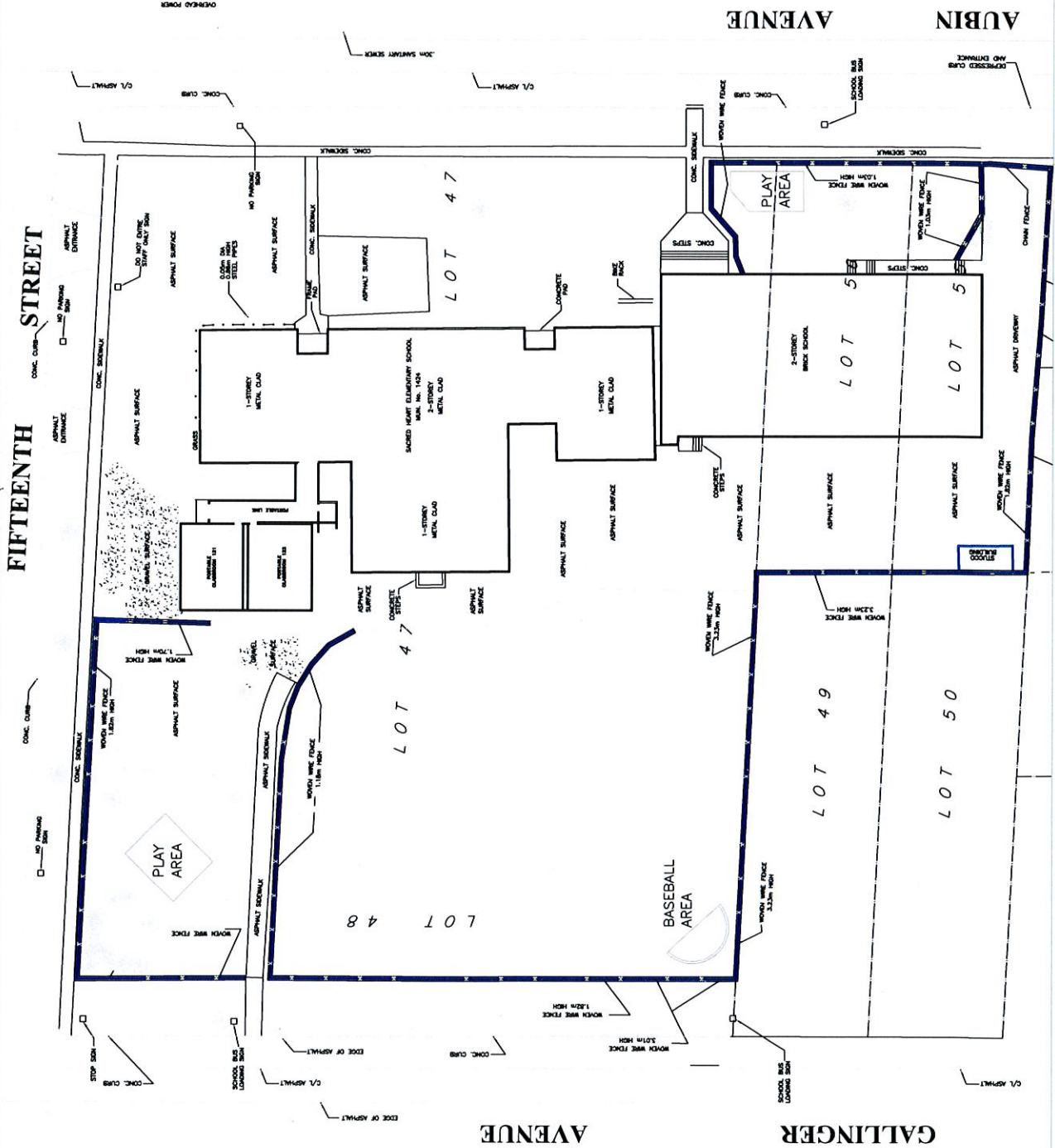
Ten-year Enrolment and Capacity Utilization Projections	See Schedule 11
---	-----------------

**OTHER SCHOOL USE PROFILE**

Current Non-School Programs or co-located within School	No
- Rent Being Collected	n/a
- Operating at Full-Cost Recovery	n/a
Community Use of the School (Permits)	Yes - 1
- Rent Being Collected	Yes - \$183.75
- Operating at Full-Cost Recovery	No
Before and After School Program	Yes
- Rent Being Collected	No
- Operating at Full-Cost Recovery	No
Lease Terms at the School	annual Child Care lease
- Rent Being Collected	No
- Operating at Full-Cost Recovery	No
Factors of a Suitable Facility for Community Planning Partnership	<ul style="list-style-type: none"> <li>- Facilities utilized at 60% or less for the past 2 consecutive years and/or have had 200 or more unused pupil places the last 2 years</li> <li>- Facilities projected to be utilized 60% or less for the next 5 years</li> <li>- Facility has not been designated as surplus space under Ontario Regulation 444/98</li> <li>- Space not required for Board programming or other uses</li> </ul>
Does the school meet the above Board criteria	No
Current Community Planning Partnerships	n/a
- Rent Being Collected	n/a
- Operating at Full-Cost Recovery	n/a

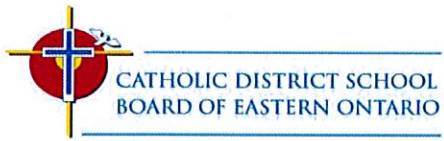


Legend:	- Fence Line
Project Title:	Sacred Heart Catholic School 1424 Aubin Avenue Cornwall, Ontario K6J 4S2
Drawing Title:	Site Plan
Date:	Oct-21-2014
Drawn By:	D.T.
Dwg: SP1	Rev: 0

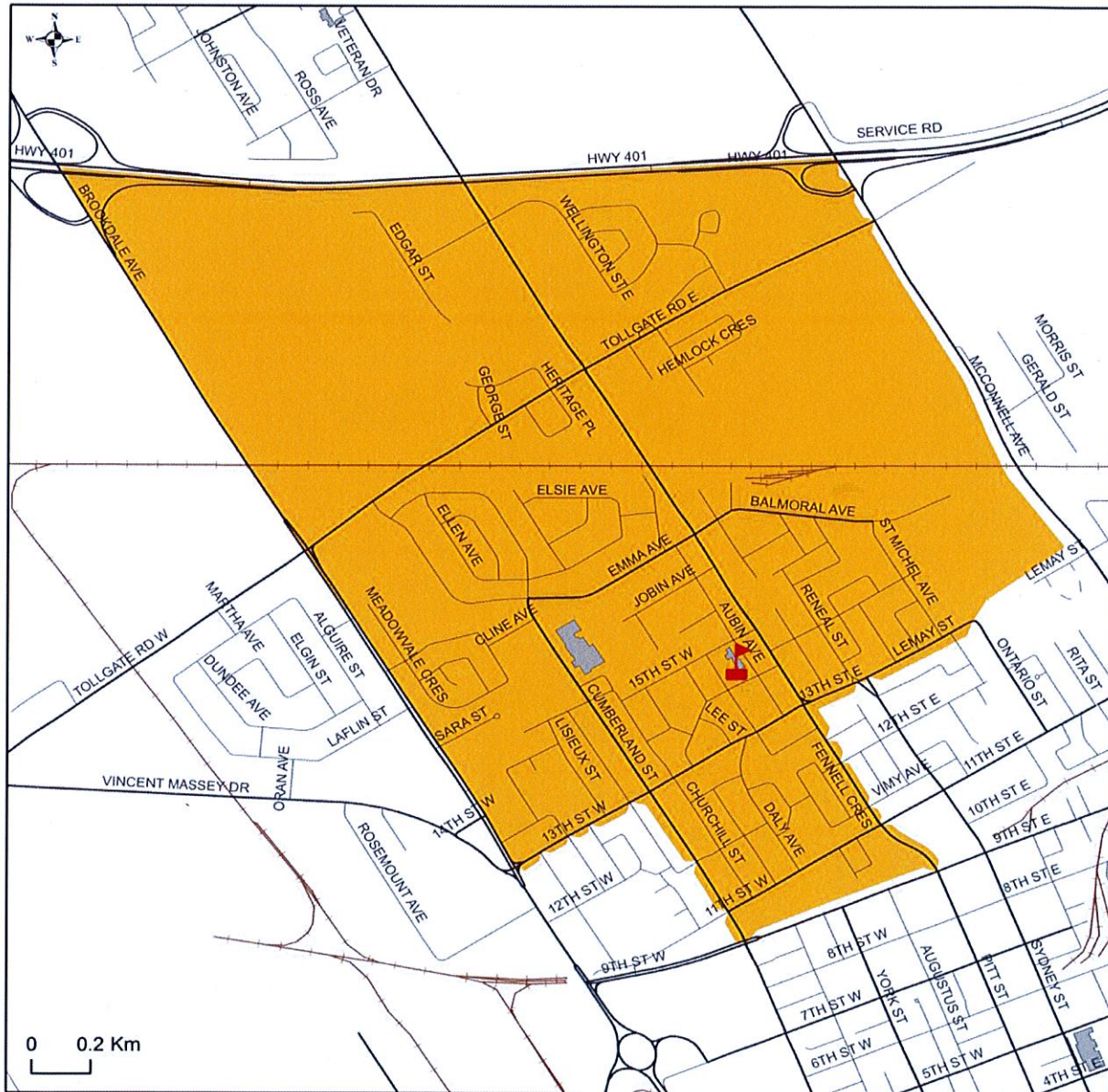








**Sacred Heart Catholic School  
Junior Kindergarten to Grade 8  
Regular Attendance Boundary**

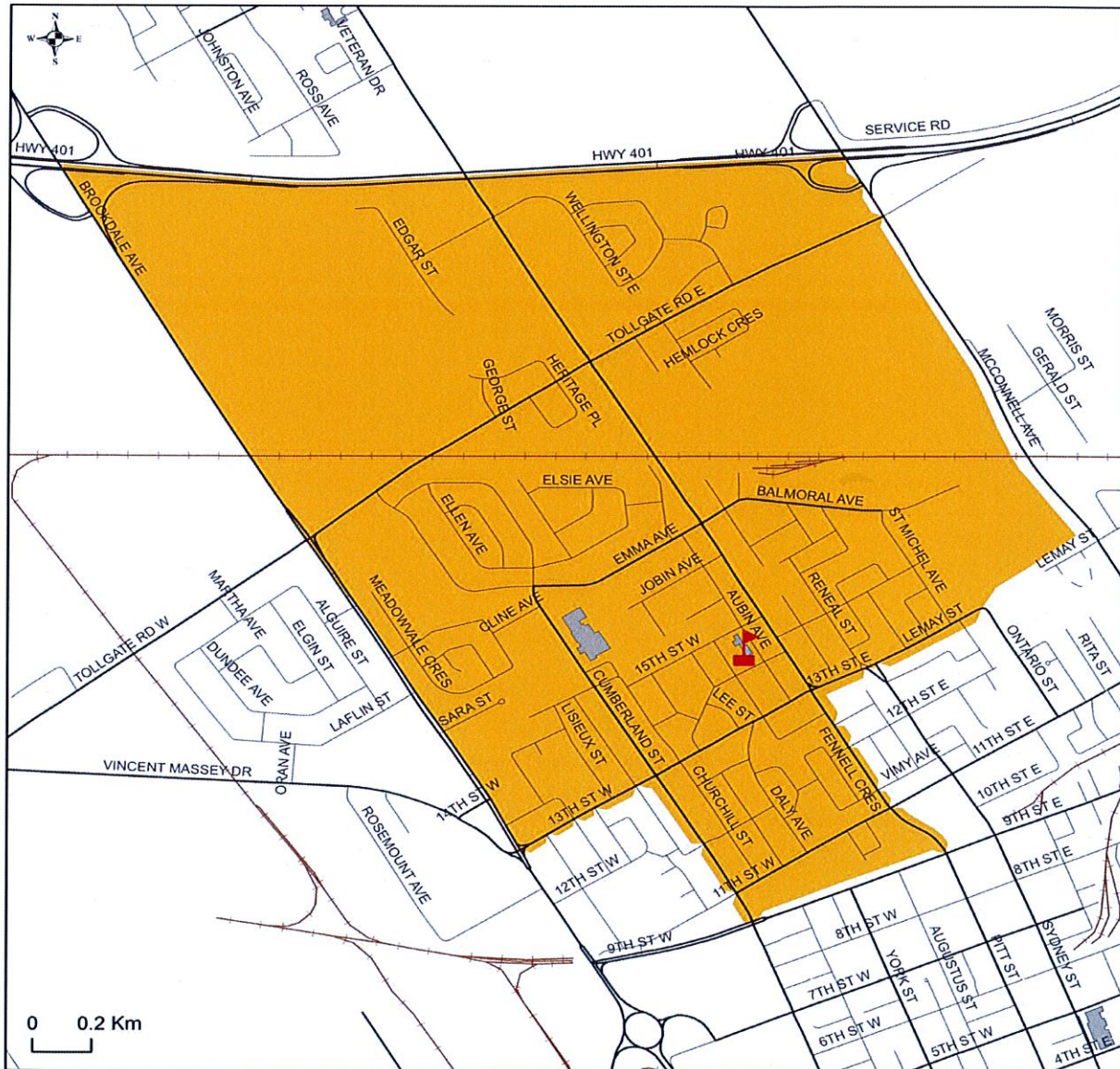


Student Transportation of Eastern Ontario, September 2015  
Map is for illustrative purposes only.  
Please use the School Locator Tool to  
determine the school of attendance by civic address  
found on the STEO Website at <http://www.steo.ca>



**Sacred Heart Catholic School**  
1424 Aubin Avenue  
Cornwall, Ontario  
K6J 4S2  
Phone: 613-933-3337





**Sacred Heart Catholic School**  
1424 Aubin Avenue  
Cornwall, Ontario  
K6J 4S2  
Phone: 613-933-3337



**SACRED HEART CATHOLIC SCHOOL - 1424 AUBIN AVENUE**



ZONING: RESIDENTIAL 20 (RES 20)

OFFICIAL PLAN DESIGNATION: URBAN RESIDENTIAL (U. RES)

Sacred Heart - Schedule 6 Room Summary from SFIS			
Permanent Space Room Summary			
Room #	Space Type	Current Use	Loading
100	Staff Work Room	Staffroom	-
103	Kindergarten	JK/SK Classroom	26.0
104	Classroom	Classroom	23.0
106	Library Resource Centre	Library Resource	-
107	Classroom	Classroom	23.0
108	Kindergarten	JK/SK Classroom	26.0
111	Classroom	Classroom	23.0
112	Classroom	Resource - General	23.0
B101	Classroom	Resource - French	23.0
201	Classroom	Classroom	23.0
202	Classroom	Classroom	23.0
203	Classroom	Classroom	23.0
204	Classroom	Classroom	23.0
205	Classroom	Classroom	23.0
206	Classroom	Classroom	23.0
207	Special Education	Special Education	9.0
208	Classroom	Resource - General	23.0
2015-16 OTG			337.0
Non-Permanent Space Room Summary			
Room #	Space Type	Current Use	Loading
121	Portapak	Classroom	23.0
122	Portapak	Classroom	23.0
2015-16 OTG			46.0

Sacred Heart - Schedule 7 Ten-Year Renewal History		
Brief Description	Year	Cost
Replace [B2020 Exterior Windows - Addition 1]	2007	\$160,544
Major Repair [B2010 Exterior Walls - Painted Finishes]	2008	\$16,524
Replace [04.3-010 Interior Lighting - Original Building and Addition 1] - Retrofit	2009	\$37,500
Replacement [D502002 Lighting Equipment - Original Building and Addition 1] - Retrofit	2009	\$50,507
Install [06.7 Other Energy - Related Equipment - Lighting Occupancy Sensors]	2009	\$15,200
Replacement [F1050 Special Controls & Instrumentation 0 Lighting Occupancy Sensors - Install	2009	\$20,564
Repairs only [G2020 Parking Lots & Roadways]	2011	\$9,046
Study [G2020 Parking Lot & Roadways]	2011	\$7,551
Replace [B3010 Roof Coverings - Section 2.2 - Original Building - Shingles]	2012	\$11,408
Program/Upgrade - Special Needs - Interior Renovations for Change Table	2012	\$4,955
Replacement [204009 Flagpole]	2012	\$2,792
Removal [F2020 Hazardous Components Abatement - Crawl Space in Electrical Room]	2013	\$16,320
Replacement [C301005 Painting to Walls - Original Building Corridor & Room 103 in Addition 1]	2014	\$3,371
Replacement [F201002 Window Treatment - Original Building, Addition 1 and Addition 2]	2014	\$10,604
Cummulative Cost		\$366,886

Sacred Heart - Schedule 8				
Projected Five-Year Renewal Needs by Priority				
Year	Brief Description	Priority	Cost	Cummulative Cost
2015	Replace [D4020 Standpipe Systems - Original Building]	Urgent	\$ 99,767	\$ 99,767.00
2015	Study	Urgent	\$ 11,024	\$ 110,791.00
2015	Replacement	Urgent	\$ 22,048	\$ 132,839.00
2015	Study [G30 Site Civil/Mechanical Utilities]	Urgent	\$ 11,024	\$ 143,863.00
2015	Replace[G30 Stie Civil/Mechanical Utilities]	Urgent	\$ 285,522	\$ 429,385.00
2015	Study [B1010 Floor Construction - Original Building]	High	\$ -	\$ 429,385.00
2015	Repair [B1010 Floor Construction - Original Building]	High	\$ 55,120	\$ 484,505.00
2015	Replace [B2010 Exterior Walls - Scalant]	High	\$ 34,174	\$ 518,679.00
2015	Replace [B201001 Interior Stair Construction - Original Building]	High	\$ 16,536	\$ 535,215.00
2015	Repair [A1010 Standard Foundations - Parging - Addition 1]	High	\$ 8,819	\$ 544,034.00
2015	D3060 Controls & Instrumentation - Original Bldg & Add'n 1	High	\$ 264,576	\$ 808,610.00
2015	Functional Events [F106003 Library Resource Ctr] Program/UG	High	\$ -	\$ 808,610.00
2015	Replacement C2010 Plumbing Fixtures - Original Bldg & Add'n 1	High	\$ 55,120	\$ 863,730.00
2015	Replacement D2020 Domestic Water Distribution - Orig Bldg & Add'n 1	High	\$ 220,480	\$ 1,084,210.00
2015	Study D2020 Domestic Water Distribution - Orig Bldg & Add'n 1	High	\$ 11,024	\$ 1,095,234.00
2015	Replacement D304003 Heating Piping Systems - Addition 1	High	\$ 661,440	\$ 1,756,674.00
2015	Study - D304003 Heating Piping Systems - Addition 1	High	\$ 11,024	\$ 1,767,698.00
2015	Functional Events [F106007 General Purpose Room - Add'n 1 Program/UG]	High	\$ -	\$ 1,767,698.00
2015	Replace [B3010 Roof Coverings - Sections 1.1 & 1.2 - Original Building]	High	\$ 102,523	\$ 1,870,221.00
2015	Replace [C1030 Fittings - Millwork - Original Building & Add'n 1]	High	\$ 250,245	\$ 2,120,466.00
2015	Replacement [D304007 Exhaust Systems - Addition 1]	High	\$ 15,434	\$ 2,135,900.00
2015	Replace [C3030 Ceiling Finishes - Acoustic Tile - Add'n 1]	High	\$ 138,902	\$ 2,274,802.00
2015	Replace [C1020 Interior Doors - Interior Door Hardware - Add'n 1]	High	\$ 16,536	\$ 2,291,338.00
2015	Replace [C1020 Interior Doors - Addition 1]	High	\$ 55,120	\$ 2,346,458.00
2015	Replace [G2030 Pedestrian Paving - Concrete Walkways & Stairs]	High	\$ 29,765	\$ 2,376,223.00
2015	Repair [B2010 Exterior Walls - Corrugated Metal Siding]	High	\$ 29,765	\$ 2,405,988.00
2015	Replace [C3010 Wall Finishes - Paint - Original Building & Add'n 1]	High	\$ 119,059	\$ 2,525,047.00
2015	Replace [B2030 Exterior Doors - Original Building & Addition 1]	High	\$ 52,915	\$ 2,577,962.00
2015	D302005 Auxiliary Equipment - Addition 1 - HVAC Pump	High	\$ 13,229	\$ 2,591,191.00
2015	Replace [B2030 Exterior Doors - Exterior Door Hardware - Orig Bldg & Add 1]	High	\$ 22,048	\$ 2,613,239.00
2015	Replacement D3050 Terminal & Package Units - Orig Bldg & Add'n 1	High	\$ 220,480	\$ 2,833,719.00
2015	Repair [G2040 Site Development - Grass Playing Field]	High	\$ 89,294	\$ 2,923,013.00
2015	Replacement [G502002 Lighting Equipment - Emergency Lighting]	High	\$ 11,024	\$ 2,934,037.00
2015	Replacement [D303002 Direct Expansion Systems - DX Split AC Units	High	\$ 17,638	\$ 2,951,675.00
2014	Replace [C3020 Floor Finishes - Vinyl Tile - Orig Bldg & Add'n 1]	Medium	\$ 114,650	\$ 3,066,325.00
2015	Replace [C3020 Floor Finishes - Hardwood - Addition 1]	Medium	\$ 52,915	\$ 3,119,240.00
2015	Study [D502001 Branch Wiring - Addition 1]	Medium	\$ 11,024	\$ 3,130,264.00
2015	Replacement [D502001 Branch Wiring - Addition 1]	Medium	\$ 617,344	\$ 3,747,608.00
2015	Replace [C1030 Fittings - Washroom Partitions - Original Building]	Medium	\$ 23,150	\$ 3,770,758.00
2015	Replacement [G2030 Pedestrian Paving - Site - school yard]	Medium	\$ 8,819	\$ 3,779,577.00
2015	Replace [C3030 Ceiling Finishes - Suspended Acoustic Panel - Orig Bldg]	Medium	\$ 20,946	\$ 3,800,523.00
2016	Replacement [D501001 Main Transformers - Addition 1]	Medium	\$ 20,167	\$ 3,820,690.00
2015	Replace [G2020 Parking Lots & Roadways]	Low	\$ 87,090	\$ 3,907,780.00
2016	Major Repair [G201001 Fencing & Gates]	Low	\$ 22,328	\$ 3,930,108.00
2016	Replacement [D302005 Auxiliary Equipment - Addition 1]	Low	\$ 11,371	\$ 3,941,479.00
2016	Replacement [D502002 Lighting Equipment - Original Building]	Low	\$ 8,474	\$ 3,949,953.00
2016	Replacement [D302099 Other Heat Generating Systems - Original building]	Low	\$ 36,860	\$ 3,986,813.00
2016	Replacement [G204005 Signage - Site]	Low	\$ 11,405	\$ 3,998,218.00
2016	Replacement [D503099 Other Communications & Alarm Systems - Add'n 1]	Low	\$ 16,374	\$ 4,014,592.00
2016	Replacement [C1030 Fittings - Addition 1]	Low	\$ 51,569	\$ 4,066,161.00
2016	Replacement [C1030 Fittings - Original Building]	Low	\$ 30,049	\$ 4,096,210.00
2016	Replacement [C1030 Fittings - Original Building]	Low	\$ 29,657	\$ 4,125,867.00
2016	Replacement [C1030 Fittings - Addition 1]	Low	\$ 45,431	\$ 4,171,298.00
2016	Replacement [G204007 Playing Fields - Site]	Low	\$ 29,860	\$ 4,201,158.00



Sacred Heart - Schedule 9 2016-17 School Organization												
Staff FTE	Prog	JK	SK	1	2	3	4	5	6	7	8	Total
1.0	Core	4	8									12
1.0	Imm	4	10									14
1.0	Core			11	7							18
1.0	Imm			10	10							20
1.0	Core				11	4						15
1.0	Imm					10	6					16
1.0	Core						9	10				19
1.0	Core							13	12			25
1.0	Imm							11	12			23
1.0	Core									16		16
1.0	Imm									13	6	19
1.0	Core										19	19
12.0		8	18	21	28	14	15	34	24	29	25	216

Number of Classes	12
FDK Class Size Average (JK/SK)	13.00
Primary Class Size Average (Gr. 1-3)	17.67
Grade 4 - 8 Class Size Average (4-8)	19.57
Number of Split Classes	10
% Split Classes	83.3%

Sacred Heart - Schedule 10 Five-Year Historical Enrolment Projections and Capacity Utilization												
OTG	337											
Year	JK	SK	1	2	3	4	5	6	7	8	Total	Utilization
11-12	14	31	26	24	29	21	25	23	25	39	257	76.3%
12-13	15	12	34	24	25	29	24	21	16	22	222	65.9%
13-14	29	13	10	35	23	24	27	21	23	17	222	65.9%
14-15	19	33	12	12	36	22	26	28	23	25	236	70.0%
15-16	15	21	31	13	16	38	21	26	28	24	233	69.1%

Sacred Heart - Schedule 11 Ten-Year Enrolment Projections and Capacity Utilization												
OTG	337											
Year	JK	SK	1	2	3	4	5	6	7	8	Total	Utilization
16-17	8	18	21	28	14	15	34	24	29	25	216	64.1%
17-18	18	12	21	20	28	14	15	34	24	29	215	63.8%
18-19	18	18	15	22	19	28	14	15	33	24	206	61.1%
19-20	18	18	18	15	22	19	28	14	15	33	200	59.3%
20-21	18	18	18	18	15	22	19	28	14	15	185	54.9%
21-22	18	18	18	18	18	15	22	19	28	14	188	55.8%
22-23	18	18	18	18	18	18	15	21	18	28	190	56.4%
23-24	18	18	18	18	18	18	18	15	20	18	179	53.1%
24-25	18	18	18	18	18	18	18	18	15	20	179	53.1%
25-26	18	18	18	18	18	18	18	18	18	15	177	52.5%