

CATHOLIC DISTRICT SCHOOL BOARD OF EASTERN ONTARIO

Box 2222, 2755 Hwy. 43,
Kemptville, Ontario K0G 1J0
Tel: 613-258-7757
Or Toll-free: 1-800-443-4562
Fax: 613-258-5067
www.cdsbeo.on.ca

Appendix 8

ST. ANNE

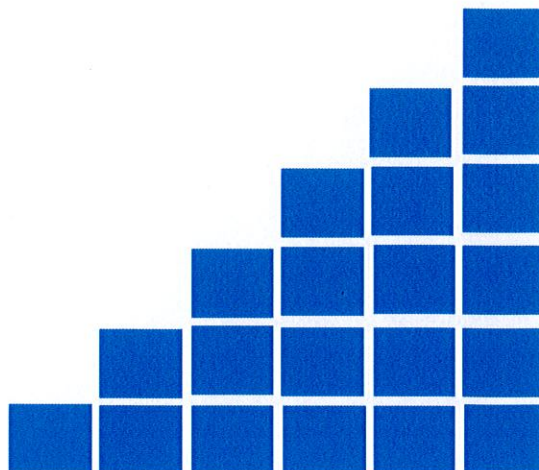
CATHOLIC SCHOOL

School Information Profile

October 2016

Brent Laton
Chair

Bill Gartland
Director of Education



Educating and Inspiring...heart, mind, body and soul!



APPENDIX 8
SCHOOL INFORMATION PROFILE
ST. ANNE CATHOLIC ELEMENTARY
October 4, 2016

FACILITY PROFILE	
School	St. Anne Catholic Elementary
Address	607 Surgenor Street Cornwall Ontario K6J 2H5
Date of Construction	1957
Date and Description of Subsequent Additions	1993 (office extension) 2005 addition and 2013 addition
Number of Storeys	2
School Site Size (Acres)	2.99
Permanent Building Area - GFA (Sq. Ft)	21,849
Number of Portables on Site	10 - RCM
Portable Area - GFA (Sq.Ft)	8,291
Site Plan Available	Yes - see Schedule 1
Floor Plan Available	Yes - see Schedule 2
Boundary Map Available	Yes - see Schedule 3 and 4
Official Plan/Zoning Map	Yes - see Schedule 5
Is the School Located Adjacent to a Catholic Church	No
Associated Parish & Distance from School	St. Francis de Sales Catholic Church - 3Km
Does the School have a Child Care Centre	No
Does the School have Child Care on Site	Yes
Name of Child Care Provider	Mary Seguin - Young Achievers and Where Children Grow
Does the School have a Before & After Child Care Program	Yes
Type of Child Care	Full Time Daycare and Before and After School Program on instructional and non-instructional days
Child Care Capacity	Preschool (30 months - 6 years) 16 , Kindergarten (44 months - 68 months) 20, Primary Junior School Age (68 months - 13 years) 60
Child Care Enrolment and Ages Served	Preschool 14 Toddlers 2 Kindergarten 27 Primary Junior School Age 85

SCHOOL CAPACITY	
Current Enrolment	339
School Capacity (OTG)	225
Surplus/(Shortage) of Pupil Places	-114
Room Summary from SFIS	see Schedule 6
Utilization Rate - excluding Portables (%)	150.7%
Utilization Rate - including Portables (%)	78.3%
Total Number of Permanent Instructional Rooms in School	9
Total Number of Portable Units on School Site	4
Total Number of Portapak/RCM Units on School Site	6

INSTRUCTIONAL AND SPECIALIZED CLASSROOM SPACES	
Number of Regular Classrooms	9
Number of Portable Classrooms	10
Number of Purpose Build Kindergarten Classrooms	0
Number of Special Education Rooms	2
Does the School have Appropriate Existing Space for:	
- Special Education	Yes
- Literacy Resource Centre	No - have bookroom
- Science and Technology Lab	No
Total Number of Dedicated Rooms	2
- Computer Lab	No
- Arts Facilities	No
Total Number of Dedicated Rooms	0
- Gymnasium	Yes
- General Purpose Room	No
- Music Room	No
- Assembly/Auditorium	No
- Library	Yes
- Staffroom	Yes
- Stage	Yes
- Chapel	No
- Kitchen	1 staffroom, 1 daycare
- Cafeteria	No

OUTDOOR PLAY AREA AND GREEN SPACE	
Area of Green Space (Sq ft)	79,913
Area of Hard Surfaced Play Area (Sq ft)	1,339
Total Number of Playfields	1
List of Outdoor Facilities (e.g. tracks, basketball court, tennis court, etc.)	two basketball areas, permanently boarded skate rink

FACILITY CONDITION	
Definition of what the FCI Represents	- FCI is determined by the ratio between the five-year renewal needs and the replacement value for the school; a higher FCI indicates a higher cost to repair the facility
Replacement Value (\$) (A)	\$ 5,897,910
Five-year Renewal Needs (\$) (B)	\$ 1,556,079
Facility Condition Index (FCI) of School (B) / (A)	26.4%
Board's Average FCI	17.7%
Total Number of Parking Spaces	35
Total Number of Accessible Parking Spaces	1
Is there an Adequate Amount of Parking Provided	Yes

ACCESSIBILITY	
Is the School Universally Accessible	No
Does the School have an Operating Elevator/Lift	No
Do Students have Access to Barrier Free Washroom	No
Are Student Washrooms Accessible on Each Level of the Building	No
Are the Designated Change rooms Accessible to the Gym	No
Accessibility Audit Cost to Retrofit	\$ 439,219

TEN-YEAR HISTORY OF MAJOR FACILITY IMPROVEMENTS	
Ten-year History of Major Facility Improvements	see Schedule 7

PROJECTED FIVE-YEAR FACILITY RENEWAL NEEDS	
Five-year Projected Facility Renewal Needs	see Schedule 8

FINANCIAL*	
Expenditures on School Staff: Teaching (\$)	\$ 2,213,655
Expenditures on School Staff: Non-Teaching (\$)	\$ 496,756
Expenditures on School Utility (\$)	\$ 42,897
- Total	\$ 2,753,307
- Per Square Foot (including Portables)	\$ 91.35
- Per Student	\$ 7,441.37
Grant Revenues for School Administration (identify any loss of revenues) (\$)	Receive benchmark level funding for 1.0 FTE Principal and 1.42 FTE Secretary. Benchmark Salary & Benefits for Principal is \$125,377. Benchmark Salary & Benefits for Secretary is \$53,494. Any school closure would result in loss of benchmark level funding for Principal. Level of School Secretarial funding depends on enrolment at new location for displaced students.
Grant Revenues for School Operations (identify any loss of revenue) (\$)	Loss of grant revenue is tied to calculated square footage requirement based on enrolment and includes School Operations, Top-up Funding and School Renewal. The school receives 100% of the maximum operations grants as enrolment exceeds the permanent capacity.
What is the impact of this Schools Closure on Facility Operating and Capital Budgets	Total facility operations grants would be reduced by approximately \$280,331. Five-year capital renewal needs totalling approximately \$1.6 million would be eliminated.
What is the impact of this School Remaining Open on Facility Operating and Capital Budgets	The costs associated with operating and maintaining this facility are \$76,864 lower than the maximum level of funding generated. Five-year renewal needs totalling more than \$1.6 million would be required to maintain the facility.

* Numbers are approximate

2015-16 TRANSPORTATION		
Bus Loading Zone	Yes	
Average Distance to School for Students (KM)	4.19	
Number of Students Bussed to School	147	
Percentage of Students that are Eligible for Transportation (%)	43.4%	
Number of Students Not Eligible for Transportation	193	
Percentage of Students that are Not Eligible for Transportation (%)	56.9%	
Shortest Bus Ride Time to School (minutes)	10	
Longest Bus Ride Time to School (minutes)	45	
Average Length of Bus Ride Time to School (minutes)	27	
Number of Primary JK - 3 Students out of Boundary and Percentage of Total	50	14.7%
Number of Junior 4 - 6 Students out of Boundary and Percentage of Total	35	10.3%
Number of Intermediate 7 - 8 Students out of Boundary and Percentage of Total	12	3.5%
Total Number of Students out of Boundary and Percentage of Total	97	28.6%
Aggregate Cost to Transport Students to School (\$)	\$ 75,000	
Cost per Student Bussed to School (\$)	\$ 510.20	

INSTRUCTIONAL PROFILE	
2016-17 STAFFING - TEACHING	
Number of Classroom Teachers	17.00
Number of Prep Time Teachers	3.16
Number of Special Education Teachers	1.50
Number of Library/Guidance Teachers	0.40
Total Teaching Staff	22.06

2016-17 STAFFING - NON-TEACHING	
Full-Time Principal (FTE)	1.00
Full-Time Vice-Principal (FTE)	0.20
Secretarial Full-Time Equivalent (FTE)	1.50
Custodial Full-Time Equivalent (FTE)	1.75
Number of Full-Time Designated Early Childhood Educators (ECE)	2.00
Number of Full-Time Educational Assistants (EA)	1.50
Total Non-Teaching Staff	7.95

2016-17 SCHOOL ORGANIZATION	
Grade Configuration	JK-8
Grade Organization (Number of Classes)	See Schedule 9
Total Number of Classes	17
Total Number of Split Classes	8
Split Classes (%)	47.1%

PROGRAM OFFERINGS AND SPECIALIZED SERVICES	
Arts Program	No
Extended French	No
French Immersion	Yes JK-8
Information Technology to Support Curriculum	Yes
Guidance Counselling	No
Religious & Family Life Programs	Yes
Career Education Programs (e.g. Co-op Placement)	No
Early Literacy Resources	Yes
Culturally Inclusive Programs	Yes
English-as-a-Second Language Programming	No
Special Education Classes	No
Special Education Resources	Yes
Programs/Support for Students at Risk	Yes
Other Specialized Programs (Identify)	n/a
Does the School have Remedial Programs Onsite During the Day and After School	No
Does the School have Access to these Programs in Nearby Facilities	Yes
Does the School Location Easily Attract Parent/Family/Community Volunteers	Yes

EXTRACURRICULAR ACTIVITIES & SPECIAL EVENTS

School Plays	Yes
Dance/Socials	Yes
Religious Retreats	Yes
Graduation Celebrations	Yes
Athletics	Yes
Clubs	Yes
Leadership/Student Council	Yes
Fundraising	Yes

STUDENT ACHIEVEMENT - EQAO - 2014-15

	Primary - School/Board	Junior - School/Board
Reading - Level 3-4	85 / 78	92 / 81
Writing - Level 3-4	94 / 80	100 / 83
Math - Level 3-4	74 / 66	68 / 51

PREVIOUS FIVE-YEAR ENROLMENT AND CAPACITY UTILIZATION

Historical Five-year Enrolment and Capacity Utilization	See Schedule 10
---	-----------------

TEN-YEAR ENROLMENT PROJECTIONS AND CAPACITY UTILIZATION

Ten-year Enrolment and Capacity Utilization Projections	See Schedule 11
---	-----------------

OTHER SCHOOL USE PROFILE

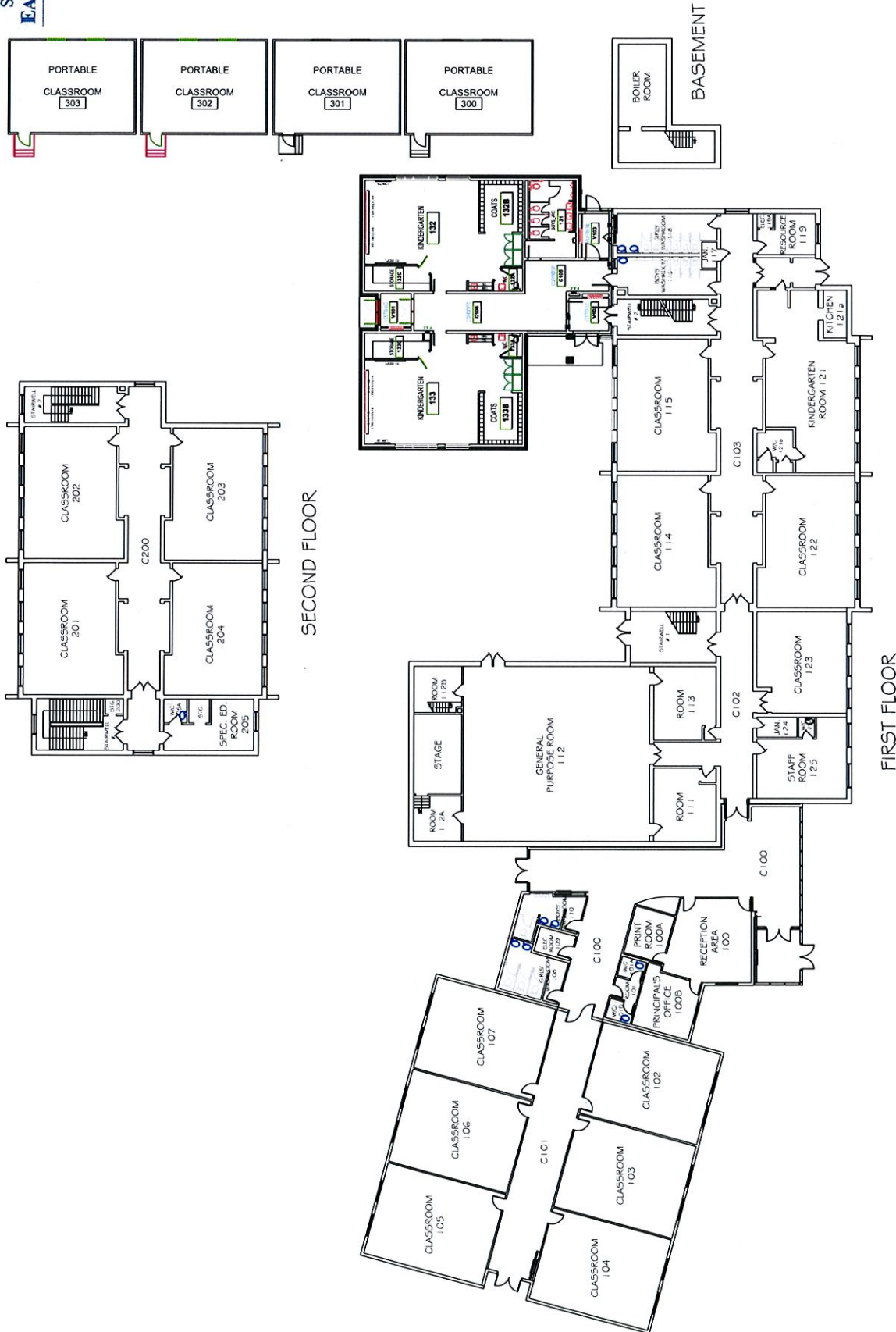
Current Non-School Programs or co-located within School	No
- Rent Being Collected	n/a
- Operating at Full-Cost Recovery	n/a
Community Use of the School (Permits)	Yes - 2
- Rent Being Collected	Yes - \$329.47
- Operating at Full-Cost Recovery	No
Before and After School Program	Yes
- Rent Being Collected	No
- Operating at Full-Cost Recovery	No
Lease Terms at the School	annual Child Care lease
- Rent Being Collected	Yes - \$2,111.97 for Full-Time Day Care
- Operating at Full-Cost Recovery	No
Factors of a Suitable Facility for Community Planning Partnership	<p>- Facilities utilized at 60% or less for the past 2 consecutive years and/or have had 200 or more unused pupil places the last 2 years</p> <p>- Facilities projected to be utilized 60% or less for the next 5 years</p> <p>- Facility has not been designated as surplus space under Ontario Regulation 444/98</p> <p>- Space not required for Board programming or other uses</p>
Does the school meet the above Board criteria	No
Current Community Planning Partnerships	n/a
- Rent Being Collected	n/a
- Operating at Full-Cost Recovery	n/a

FLOOR PLAN - SCHEDULE 2

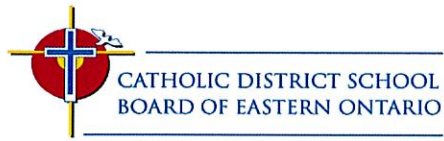
Project Title:
St. Anne Catholic School
607 Surgenor Street
Cornwall, Ontario
K6J 2H5

Drawing Title:
TCPS Floor Plan

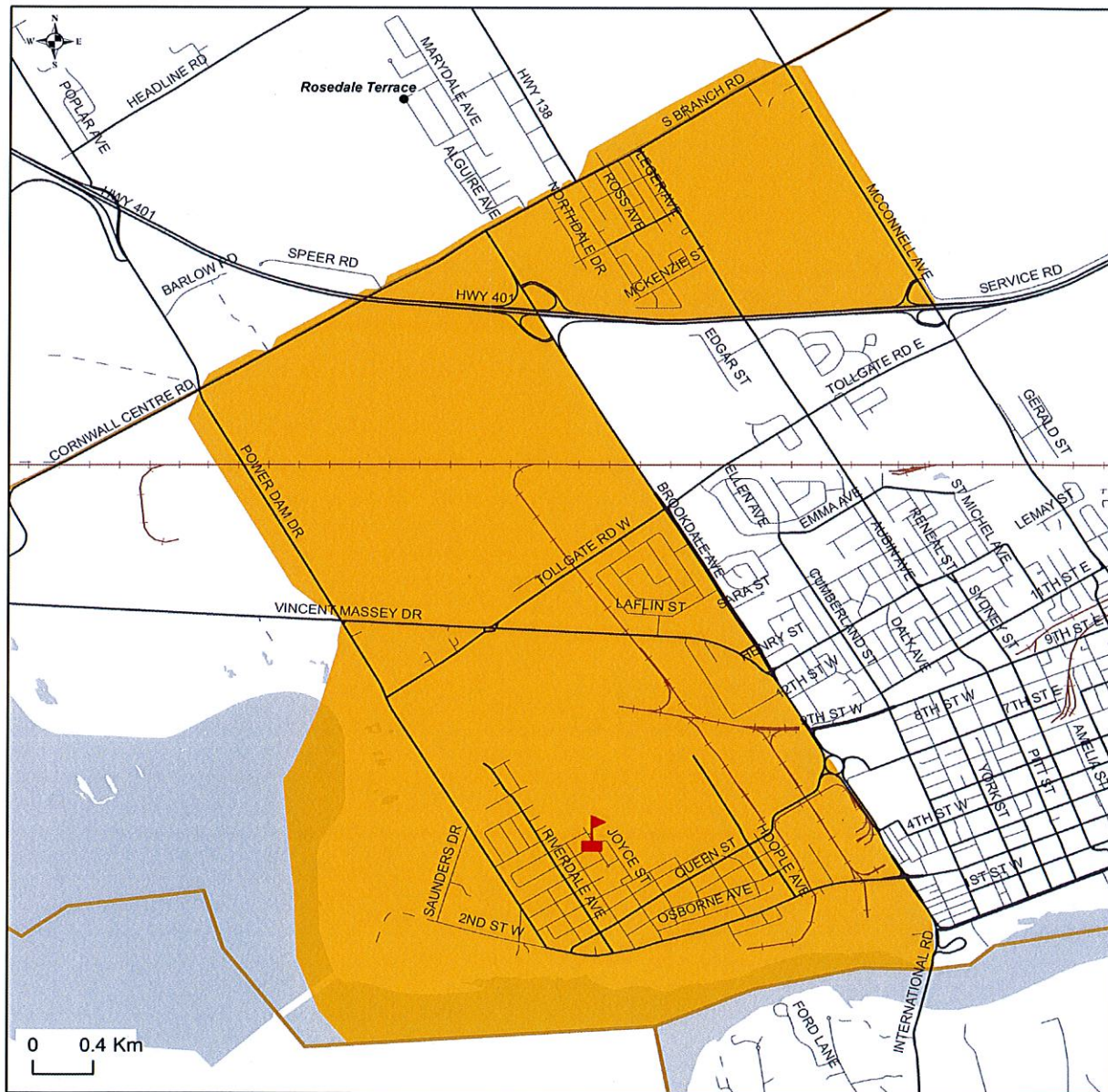
Date: October 16, 2013
Dwg: A1
Drawn By: D.T.
Rev.#: 0



St. Anne - Schedule 3
Boundary Map - Regular

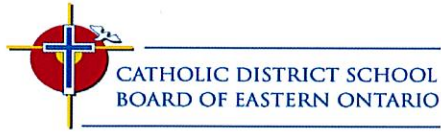


St. Anne Catholic School
Junior Kindergarten to Grade 8
Regular Attendance Boundary

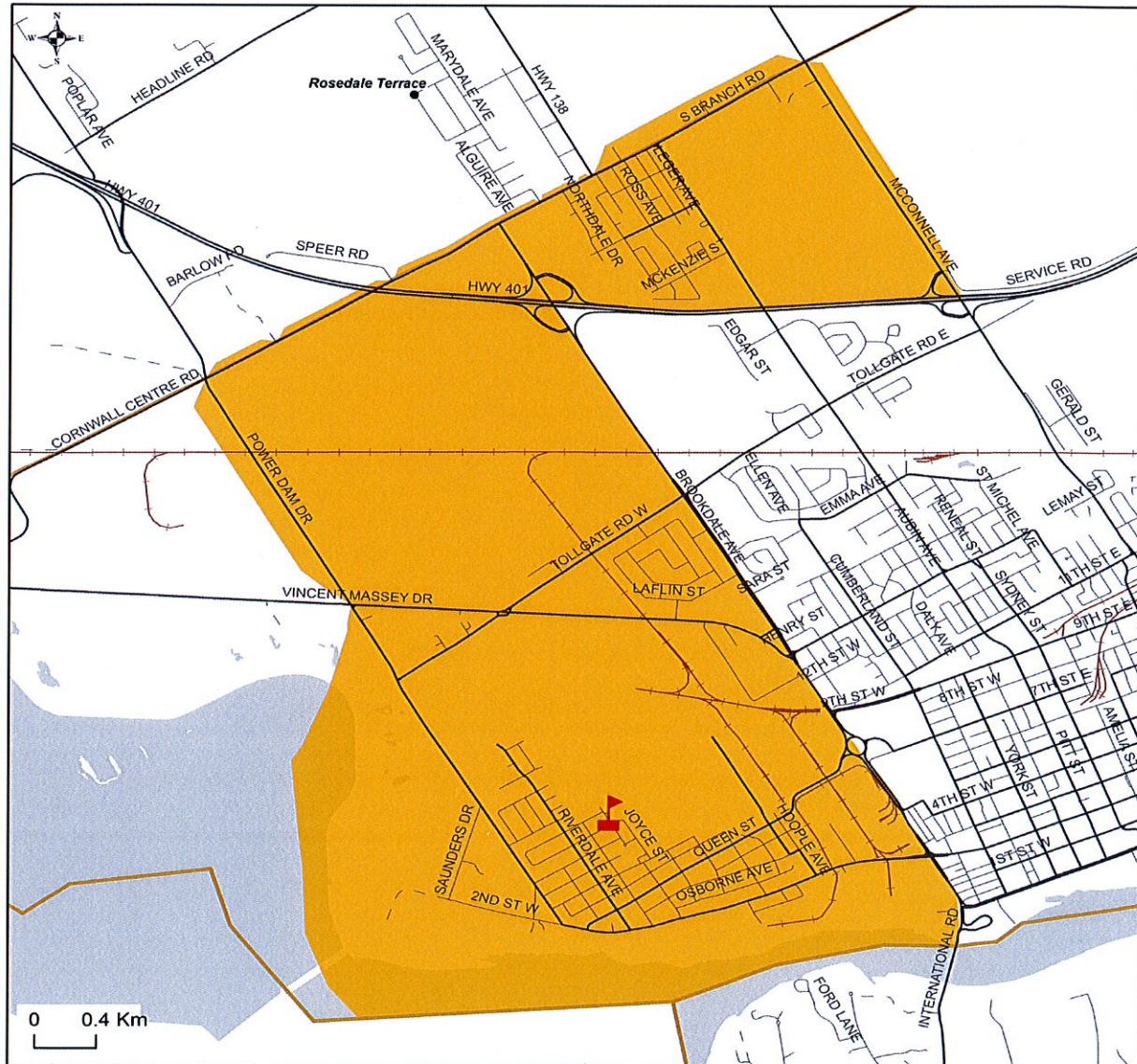


Student Transportation of Eastern Ontario, September 2015
Map is for illustrative purposes only.
Please use the School Locator Tool to
determine the school of attendance by civic address
found on the STEO Website at <http://www.steo.ca>


St. Anne Catholic School
607 Surgenor Street
Cornwall, Ontario
K6J 2H5
Phone: 613-933-4615



St. Anne Catholic School
Junior Kindergarten to Grade 8
Immersion Attendance Boundary



Student Transportation of Eastern Ontario, September 2015
Map is for illustrative purposes only.
Please use the School Locator Tool to
determine the school of attendance by civic address
found on the STEO Website at <http://www.steo.ca>

 St. Anne Catholic School
607 Surgenor Street
Cornwall, Ontario
K6J 2H5
Phone: 613-933-4615

ST. ANNE C.S. - 607 SURGENOR STREET



ZONING: RESIDENTIAL 10 (RES 10)

OFFICIAL PLAN DESIGNATION: URBAN RESIDENTIAL (U. RES)

St. Anne - Schedule 6			
Room Summary from SFIS			
Permanent Space Room Summary			
Room #	Space Type	Current Use	Loading
121	Child Care Centre	Child Care	-
114	Classroom	Classroom	23.0
122	Classroom	Classroom	23.0
201	Classroom	Classroom	23.0
202	Classroom	Classroom	23.0
203	Classroom	Classroom	23.0
204	Classroom	Classroom	23.0
115	Classroom	Jr/Sr Kindergarten	23.0
112	Gymnasium	Gymnasium	-
132	Kindergarten	Jr/Sr Kindergarten	26.0
133	Kindergarten	Jr/Sr Kindergarten	26.0
123	Resource Room	Resource - General	12.0
111	Seminar Room	Seminar	-
125	Staff Work Room/Lounge	Staff Rm/Lounge	-
2015-16 OTG			225.0
Non-Permanent Space Room Summary			
Room #	Space Type	Current Use	Loading
301	Portable	Resource	12.0
303	Portable	Classroom	23.0
302	Portable	Classroom	23.0
304	Portable	Classroom	23.0
102	RCM Non-Permanent	Library Resource	12.0
103	RCM Non-Permanent	Classroom	23.0
104	RCM Non-Permanent	Classroom	23.0
105	RCM Non-Permanent	Classroom	23.0
107	RCM Non-Permanent	Classroom	23.0
106	RCM Non-Permanent	Classroom	23.0
2015-16 OTG			208.0

St. Anne - Schedule 7		
Ten-Year Renewal History		
Brief Description	Year	Cost
Replace [04.2-010 Secondary Switchgear]	2005	\$24,500
Replace [04.5-040 Communication Systems - Original Building]	2005	\$10,712
Condition survey study.	2005	\$15,265
Replace underground utilities.	2005	\$290,044
Replace [00.1-011 Aboveground Utilities - Site]	2005	\$12,165
Replace [04.3-010 Interior Lighting - Original Building, Addition 1 and Addition 2] - Retrofit	2009	\$16,478
Replacement [D502002 Lighting Equipment - Original Building, Addition 1 and Addition 2] - Retrofit	2009	\$21,638
Install [06.7 Other Energy - Related Equipment - Lighting Occupancy Sensors]	2009	\$3,857
Replacement [F1050 Special Controls & Instrumentation - Lighting Occupancy Sensors] Install	2009	\$5,578
Replacement [C3020 Floor Finishes - Gymnasium - Floor Tiles]	2012	\$39,061
Addition [D502001 Receptacles - Original Building (Room 122) & Addition 1]	2012	\$1,239
Remove [F2020 Hazardous Components Abatement - Asbestos on Mechanical System]	2013	\$25,000
Replacement [G204003 Exterior Furnishings - Mulch]	2013	\$2,116
Replacement [C301005 Painting to Walls - Original & Addition 2 Corridors]	2014	\$2,500
Replacement [C3020 Floor Finishes - Original Building - Classrooms 115, 122 & 119]	2014	\$16,010
		\$486,163

St. Anne - Schedule 8
Projected Five-Year Renewal Needs by Priority

Year	Brief Description	Priority	Cost	Cummulative Cost
2016	Replacement [D304003 Heating/Chilling water distribution systems - Original Building/Add	Urgent	\$332,925	\$ 332,925
2016	Replacement [D3050 Terminal & Package Units - Original Building & Addition 1, 2]	High	\$242,528	\$ 575,453
2016	Replacement [D302005 Auxiliary Equipment - Original Building]	High	\$13,229	\$ 588,682
2016	Replacement [D502002 Lighting Equipment - Original Building & Addition 1, 2]	High	\$233,709	\$ 822,390
2016	Replacement [D502002 Lighting Equipment - Original Building & Addition 1, 2]	High	\$16,536	\$ 838,926
2016	Replacement [D502002 Lighting Equipment - Original Building & Addition 1, 2]	High	\$19,843	\$ 858,770
2016	Replacement [D3060 Controls & Instrumentation - Original Building & Addition 1, 2]	High	\$132,288	\$ 991,058
2016	Replacement [D2010 Plumbing Fixtures - Original Building & Addition 1, 2]	High	\$79,373	\$ 1,070,430
2016	Replacement [D2020 Domestic Water Distribution - Original Building & Addition 1, 2]	High	\$142,761	\$ 1,213,191
2018	Replacement [B3010 Roof Coverings - Addition 2]	High	\$68,827	\$ 1,282,018
2016	Replacement [D503004 Public Address Systems - Original Building & Addition 1, 2]	High	\$37,206	\$ 1,319,224
2018	Replacement - Fittings Classroom Millwork - 1957	Medium	\$69,528	\$ 1,388,753
2018	Replacement [D502001 Branch Wiring - Original Building & Addition 1, 2]	Medium	\$151,326	\$ 1,540,079
2018	Replacement [C301005 Painting - Doors & Frames - Original & Additions]	Medium	\$8,000	\$ 1,548,079
2017	Replacement [C301005 - Painting to Walls - Addition 1 - Gymnasium & Rooms]	Low	\$5,000	\$ 1,553,079
2017	Replacement [C3010 Wall Finishes - Stucco - Addition 2]	Low	\$3,000	\$ 1,556,079

St. Anne - Schedule 9
2016-17 School Organization

Staff FTE	Prog	JK	SK	1	2	3	4	5	6	7	8	Total
1.0	Imm	17	13									30
1.0	Imm	15	13									28
1.0	Imm	7	8									15
1.0	Core			12	7							19
1.0	Imm			16								16
1.0	Imm			14								14
1.0	Imm				9	11						20
1.0	Imm				19							19
1.0	Core					9	14					23
1.0	Imm					19						19
1.0	Imm						21					21
1.0	Core							11	19			30
1.0	Imm							27				27
1.0	Imm								19			19
1.0	Core									14	8	22
1.0	Imm									27		27
1.0	Imm										21	21
17.0		39	34	42	35	39	35	38	38	41	29	370

Number of Classes	17
FDK Class Size Average (JK/SK)	24.33
Primary Class Size Average (Gr. 1-3)	17.60
Grade 4 - 8 Class Size Average (4-8)	23.22
Number of Split Classes	8
% Split Classes	47.1%

St. Anne- Schedule 10												
Five-Year Historical Enrolment Projections and Capacity Utilization												
OTG	225											
Year	JK	SK	1	2	3	4	5	6	7	8	Total	Utilization
11-12	28	35	28	43	27	40	35	32	47	36	351	156.0%
12-13	32	34	38	31	40	27	38	35	34	46	355	157.8%
13-14	38	32	33	36	32	39	28	38	35	34	345	153.3%
14-15	31	31	40	29	34	32	41	28	32	33	331	147.1%
15-16	28	35	33	40	31	34	33	43	29	33	339	150.7%

St. Anne - Schedule 11												
Ten-Year Enrolment Projections and Capacity Utilization												
OTG	225											
Year	JK	SK	1	2	3	4	5	6	7	8	Total	Utilization
16-17	39	34	42	35	39	35	38	38	41	29	370	164.4%
17-18	33	34	34	42	35	39	35	36	38	41	367	163.1%
18-19	33	34	34	35	42	35	39	35	37	38	362	160.9%
19-20	33	35	35	35	35	42	35	39	35	37	361	160.4%
20-21	33	35	35	36	35	36	42	35	39	35	361	160.4%
21-22	33	35	35	36	36	36	37	42	35	39	364	161.8%
22-23	33	35	35	36	36	37	37	38	42	35	364	161.8%
23-24	34	35	35	36	36	37	37	38	38	42	368	163.6%
24-25	34	35	35	36	36	37	38	38	39	39	367	163.1%
25-26	34	35	35	36	36	37	38	38	39	39	367	163.1%
25-26	34	35	35	36	36	37	37	38	39	39	366	162.7%